



Session:2020-21(ODD)

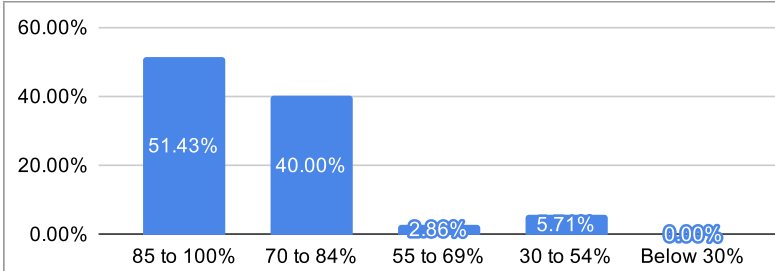
**Student Satisfaction Survey Part A (Teaching Learning) Feedback Analysis**

Semester: 3rd Semester Section B

Number of Students participated: 35

**1. How much of the syllabus was covered in the class?**

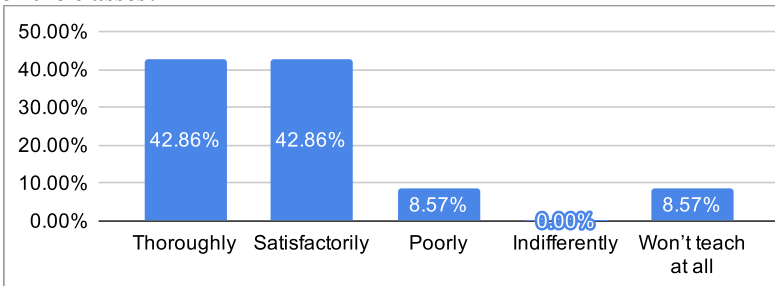
% of Syllabus	% of Students
85 to 100%	51.43%
70 to 84%	40.00%
55 to 69%	2.86%
30 to 54%	5.71%
Below 30%	0.00%



<b>% Satisfaction</b>
<b>91.43%</b>
<b>Remark</b>
<b>Excellent</b>

**2. How well did the teachers prepare for the classes?**

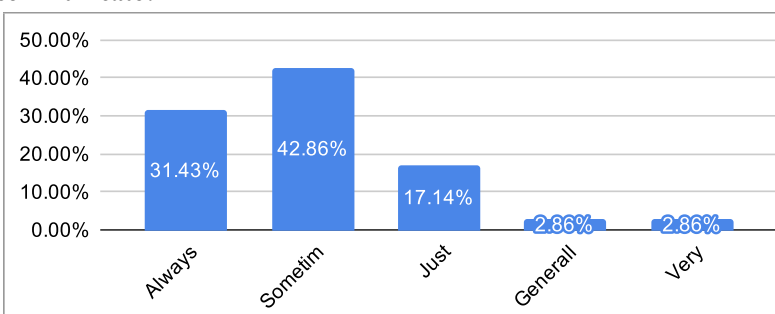
Ratings	% of Students
Thoroughly	42.86%
Satisfactorily	42.86%
Poorly	8.57%
Indifferently	0.00%
Won't teach at all	8.57%



<b>% Satisfaction</b>
<b>85.71%</b>
<b>Remark</b>
<b>Excellent</b>

**3. How well were the teachers able to communicate?**

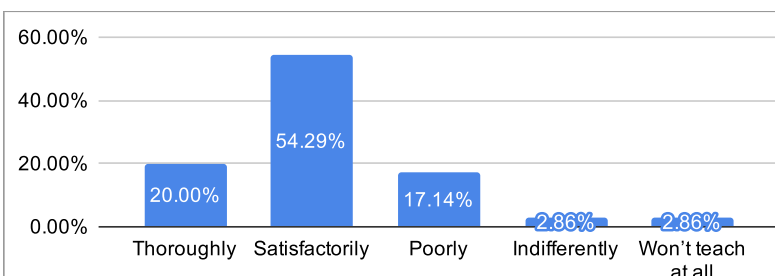
Ratings	% of Students
Always effective	31.43%
Sometimes effective	42.86%
Just satisfactorily	17.14%
Generally ineffective	2.86%
Very poor communication	2.86%



<b>% Satisfaction</b>
<b>74.29%</b>
<b>Remark</b>
<b>Very Good</b>

**4. The teacher's approach to teaching can best be described as**

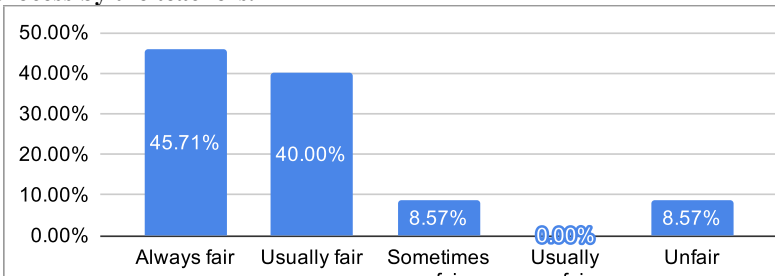
Ratings	% of Students
Thoroughly	20.00%
Satisfactorily	54.29%
Poorly	17.14%
Indifferently	2.86%
Won't teach at all	2.86%



<b>% Satisfaction</b>
<b>74.29%</b>
<b>Remark</b>
<b>Very Good</b>

**5. Fairness of the internal evaluation process by the teachers.**

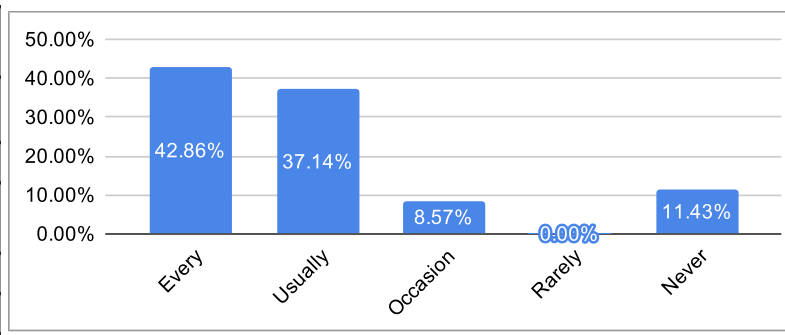
Ratings	% of Students
Always fair	45.71%
Usually fair	40.00%
Sometimes unfair	8.57%
Usually unfair	0.00%
Unfair	8.57%



<b>% Satisfaction</b>
<b>85.71%</b>
<b>Remark</b>
<b>Excellent</b>

**6. Was your performance in assignments discussed with you?**

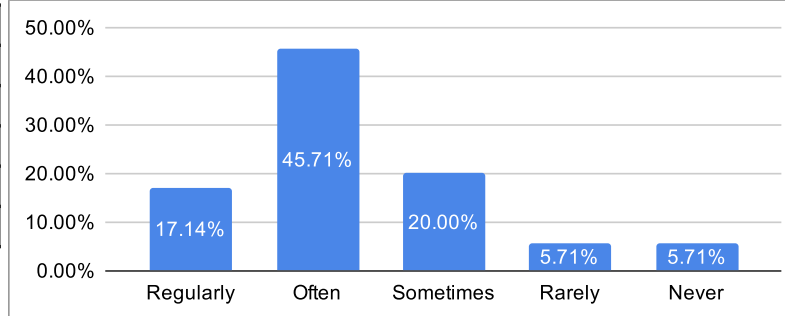
Ratings	% of Students
Every time	42.86%
Usually	37.14%
Occasionally/Sometimes	8.57%
Rarely	0.00%
Never	11.43%



<b>% Satisfaction</b>	<b>80.00%</b>
<b>Remark</b>	<b>Very Good</b>

**7. The institute takes active interest in promoting internship opportunities for students.**

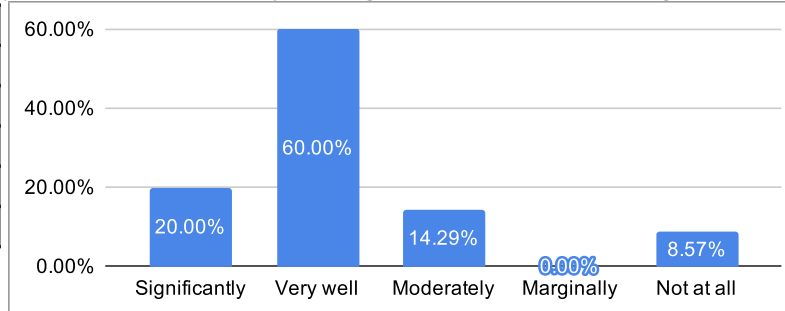
Ratings	% of Students
Regularly	17.14%
Often	45.71%
Sometimes	20.00%
Rarely	5.71%
Never	5.71%



<b>% Satisfaction</b>	<b>62.86%</b>
<b>Remark</b>	<b>Good</b>

**8 The teaching and mentoring process in your institution facilitates you in cognitive, social and emotional growth.**

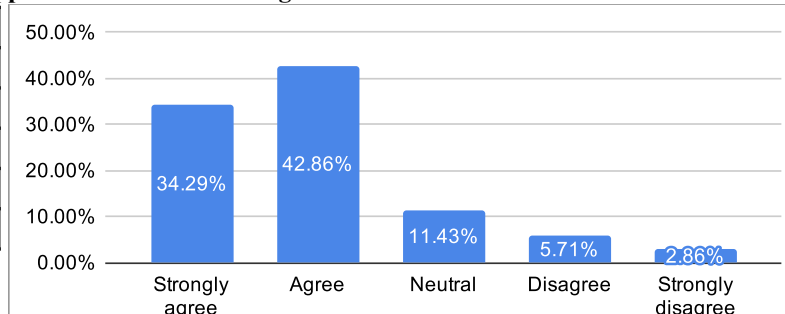
Ratings	% of Students
Significantly	20.00%
Very well	60.00%
Moderately	14.29%
Marginally	0.00%
Not at all	8.57%



<b>% Satisfaction</b>	<b>80.00%</b>
<b>Remark</b>	<b>Very Good</b>

**9. The institution provides multiple opportunities to learn and grow.**

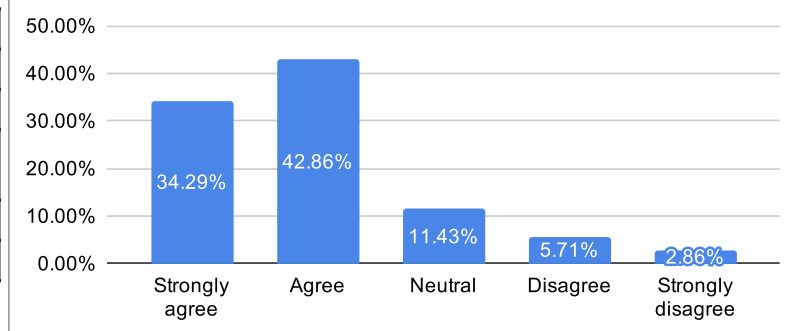
Ratings	% of Students
Strongly agree	34.29%
Agree	42.86%
Neutral	11.43%
Disagree	5.71%
Strongly disagree	2.86%



<b>% Satisfaction</b>	<b>77.14%</b>
<b>Remark</b>	<b>Very Good</b>

**10. Teachers inform you about your expected competencies, course outcomes and programme outcomes and review the course syllabus in the class.**

Ratings	% of Students
Every time	45.71%
Usually	37.14%
Occasionally/Sometimes	11.43%
Rarely	0.00%
Never	8.57%



<b>% Satisfaction</b>	<b>82.86%</b>
<b>Remark</b>	<b>Very Good</b>

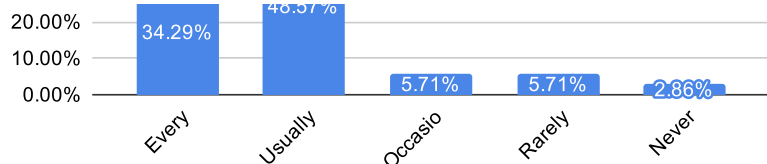
**11. Your mentor does a necessary follow-up with an assigned task to you.**

Ratings	% of Students
Every time	34.29%
Usually	48.57%



<b>% Satisfaction</b>	<b>82.86%</b>
-----------------------	---------------

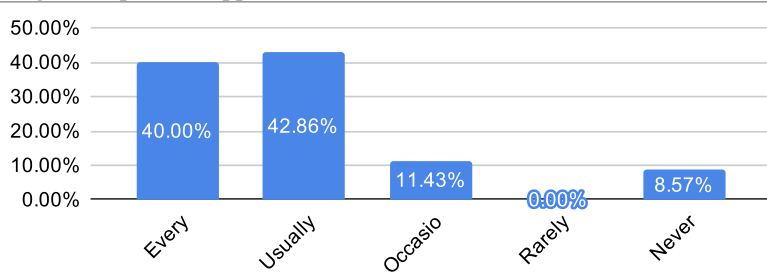
Occasionally/Sometimes	5.71%
Rarely	5.71%
Never	2.86%



<b>Remark</b>
<b>Very Good</b>

**12. The teachers illustrate the concepts through examples and applications.**

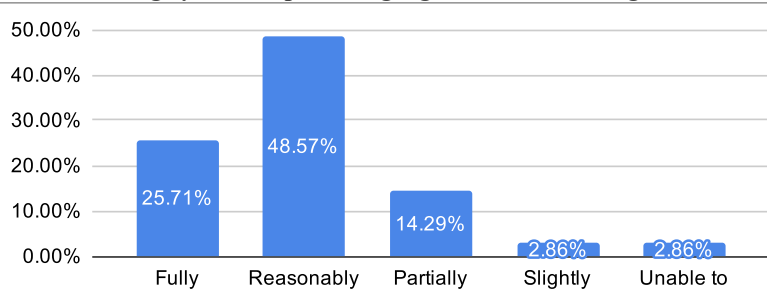
Ratings	% of Students
Every time	40.00%
Usually	42.86%
Occasionally/Sometimes	11.43%
Rarely	0.00%
Never	8.57%



<b>% Satisfaction</b>
<b>82.86%</b>
<b>Remark</b>
<b>Very Good</b>

**13. The teachers identify your strengths and encourage you with providing right level of challenges.**

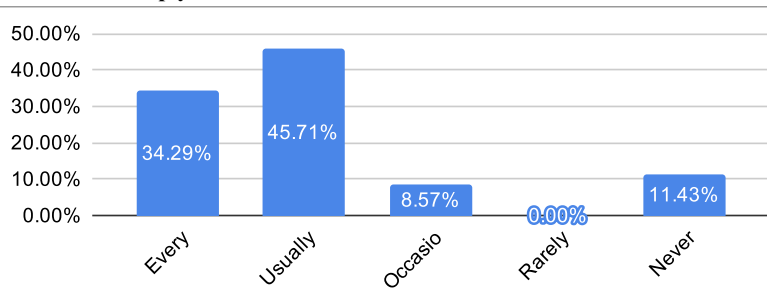
Ratings	% of Students
Fully	25.71%
Reasonably	48.57%
Partially	14.29%
Slightly	2.86%
Unable to	2.86%



<b>% Satisfaction</b>
<b>74.29%</b>
<b>Remark</b>
<b>Very Good</b>

**14. Teachers are able to identify your weaknesses and help you to overcome them.**

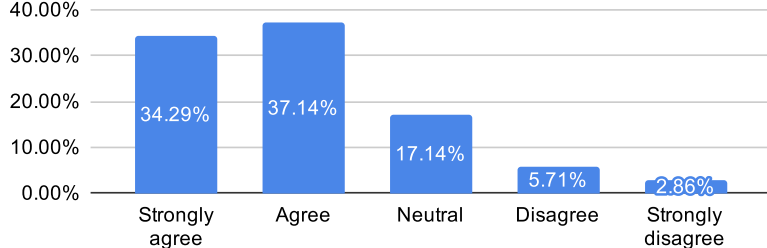
Ratings	% of Students
Every time	34.29%
Usually	45.71%
Occasionally/Sometimes	8.57%
Rarely	0.00%
Never	11.43%



<b>% Satisfaction</b>
<b>80.00%</b>
<b>Remark</b>
<b>Very Good</b>

**15. The institution makes effort to engage students in the monitoring, review and continuous quality improvement of the teaching learning process**

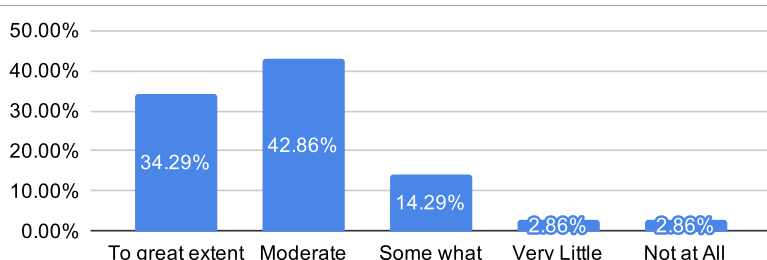
Ratings	% of Students
Strongly agree	34.29%
Agree	37.14%
Neutral	17.14%
Disagree	5.71%
Strongly disagree	2.86%



<b>% Satisfaction</b>
<b>71.43%</b>
<b>Remark</b>
<b>Very Good</b>

**16. The institute/ teachers use student centric methods, such as experiential learning, participative learning and problem solving methodologies for enhancing learning experiences.**

Ratings	% of Students
To great extent	34.29%
Moderate	42.86%
Some what	14.29%
Very Little	2.86%
Not at All	2.86%



<b>% Satisfaction</b>
<b>77.14%</b>
<b>Remark</b>
<b>Very Good</b>

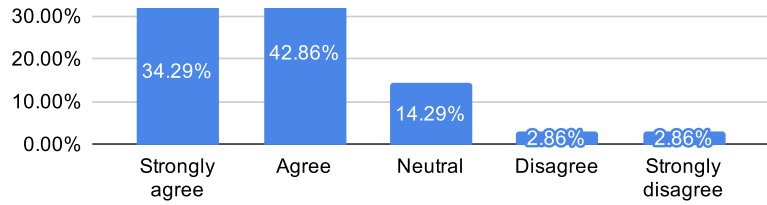
**17. Teachers encourage you to participate in extracurricular activities**

Ratings	% of Students
Strongly agree	34.29%



<b>% Satisfaction</b>
-----------------------

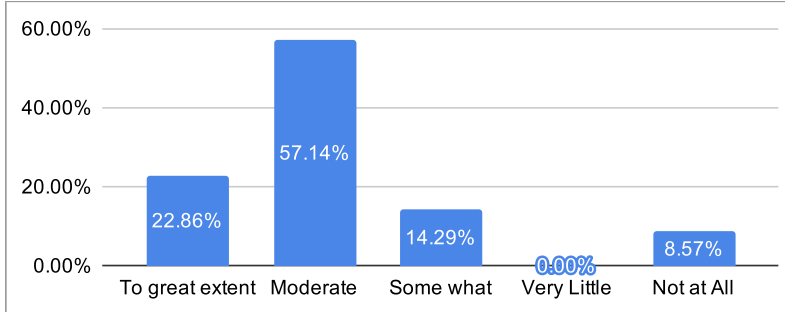
Agree	42.86%
Neutral	14.29%
Disagree	2.86%
Strongly disagree	2.86%



77.14%
Remark
Very Good

**18. Efforts are made by the institute/ teachers to inculcate soft skills, life skills and employability skills to make you ready for the world of work.**

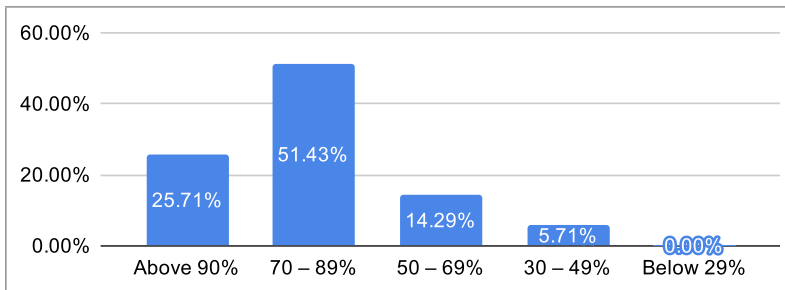
Ratings	% of Students
To great extent	22.86%
Moderate	57.14%
Some what	14.29%
Very Little	0.00%
Not at All	8.57%



% Satisfaction
80.00%
Remark
Very Good

**19. What percentage of teachers uses ICT tools such as PPTs, Multimedia, animations, etc. while teaching.**

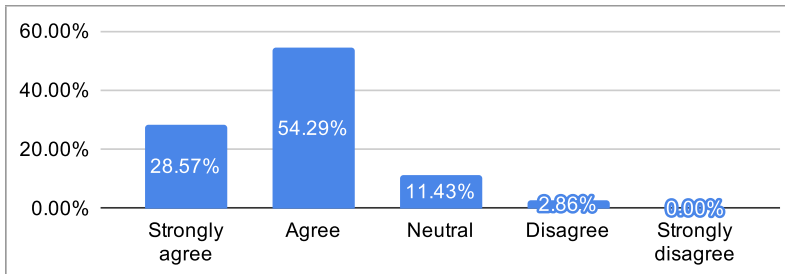
Ratings	% of Students
Above 90%	25.71%
70 – 89%	51.43%
50 – 69%	14.29%
30 – 49%	5.71%
Below 29%	0.00%



% Satisfaction
77.14%
Remark
Very Good

**20. The overall quality of teaching-learning process in your institute is very good.**

Ratings	% of Students
Strongly agree	28.57%
Agree	54.29%
Neutral	11.43%
Disagree	2.86%
Strongly disagree	0.00%



% Satisfaction
82.86%
Remark
Very Good

Feedback Incharge

Head of Department