



**S. B. JAIN INSTITUTE OF TECHNOLOGY, MANAGEMENT & RESEARCH, NAGPUR.**

(An Autonomous Institute, Affiliated to RTMNU, Nagpur)

**DEPARTMENT OF COMPUTER SCIENCE & ENGINEERING**

To become a center for quality education in the field of Computer Science & Engineering and to create competent professionals.



Session:2020-21(EVEN)

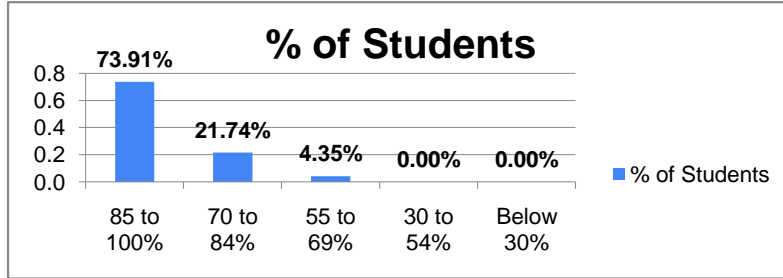
**Student Satisfaction Survey Part A (Teaching Learning) Feedback Analysis**

Semester: 4th Semester Section B

Number of Students participated: 46

**1. How much of the syllabus was covered in the class?**

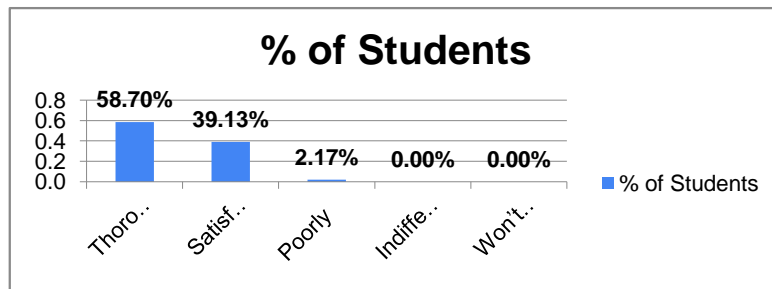
% of Syllabus	% of Students
85 to 100%	73.91%
70 to 84%	21.74%
55 to 69%	4.35%
30 to 54%	0.00%
Below 30%	0.00%



<b>%</b>
<b>95.65%</b>
<b>Remark</b>
<b>Excellent</b>

**2. How well did the teachers prepare for the classes?**

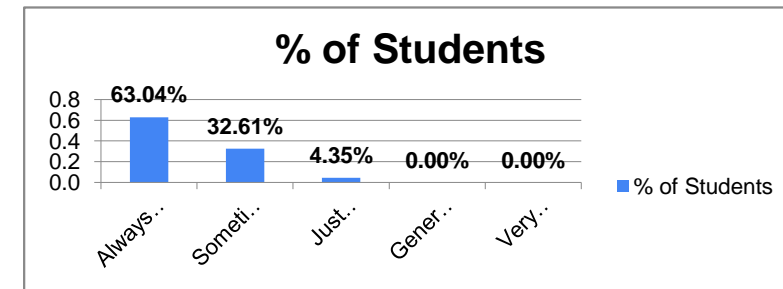
Ratings	% of Students
Thoroughly	58.70%
Satisfactorily	39.13%
Poorly	2.17%
Indifferently	0.00%
Won't teach at all	0.00%



<b>%</b>
<b>97.83%</b>
<b>Remark</b>
<b>Excellent</b>

**3. How well were the teachers able to communicate?**

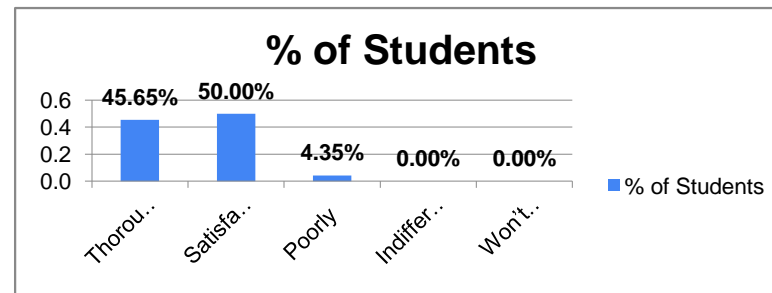
Ratings	% of Students
Always effective	63.04%
Sometimes effective	32.61%
Just satisfactorily	4.35%
Generally ineffective	0.00%
Very poor communication	0.00%



<b>%</b>
<b>95.65%</b>
<b>Remark</b>
<b>Excellent</b>

**4. The teacher's approach to teaching can best be described as**

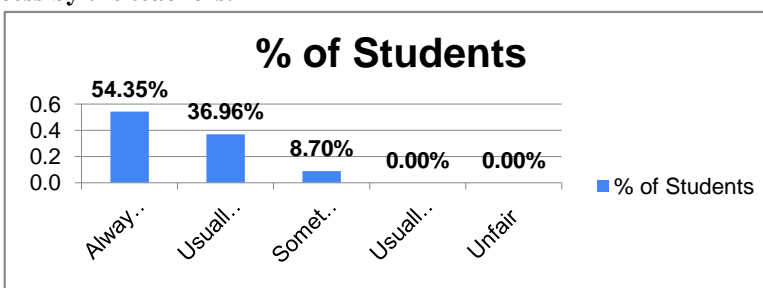
Ratings	% of Students
Thoroughly	45.65%
Satisfactorily	50.00%
Poorly	4.35%
Indifferently	0.00%
Won't teach at all	0.00%



<b>% Satisfaction</b>
<b>95.65%</b>
<b>Remark</b>
<b>Excellent</b>

**5. Fairness of the internal evaluation process by the teachers.**

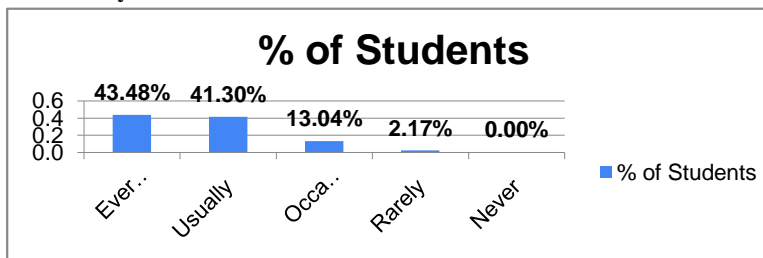
Ratings	% of Students
Always fair	54.35%
Usually fair	36.96%
Sometimes unfair	8.70%
Usually unfair	0.00%
Unfair	0.00%



<b>% Satisfaction</b>
<b>91.30%</b>
<b>Remark</b>
<b>Excellent</b>

**6. Was your performance in assignments discussed with you?**

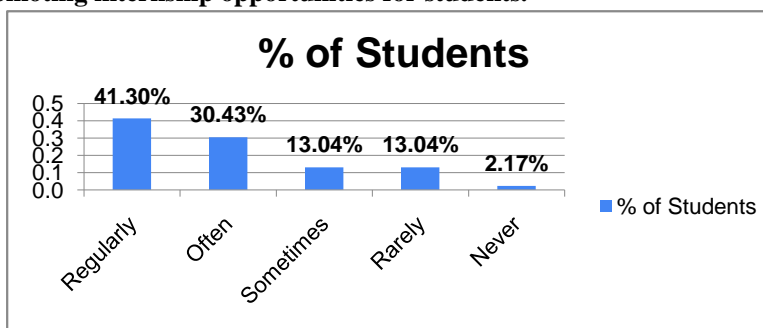
Ratings	% of Students
Every time	43.48%
Usually	41.30%
Occasionally/Sometimes	13.04%
Rarely	2.17%
Never	0.00%



<b>% Satisfaction</b>
<b>84.78%</b>
<b>Remark</b>
<b>Very Good</b>

**7. The institute takes active interest in promoting internship opportunities for students.**

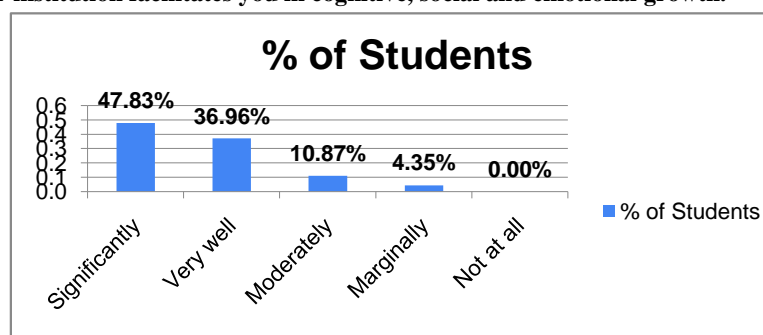
Ratings	% of Students
Regularly	41.30%
Often	30.43%
Sometimes	13.04%
Rarely	13.04%
Never	2.17%



<b>% Satisfaction</b>
<b>71.74%</b>
<b>Remark</b>
<b>Very Good</b>

**8 The teaching and mentoring process in your institution facilitates you in cognitive, social and emotional growth.**

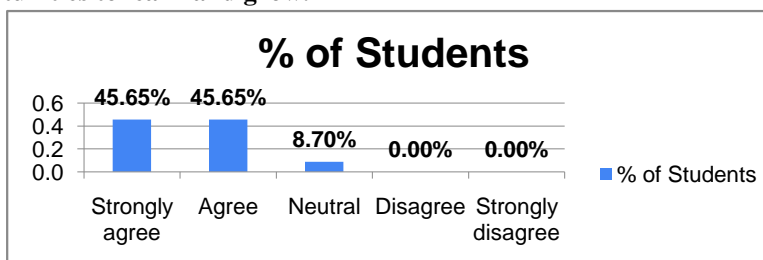
Ratings	% of Students
Significantly	47.83%
Very well	36.96%
Moderately	10.87%
Marginally	4.35%
Not at all	0.00%



<b>% Satisfaction</b>
<b>84.78%</b>
<b>Remark</b>
<b>Very Good</b>

**9. The institution provides multiple opportunities to learn and grow.**

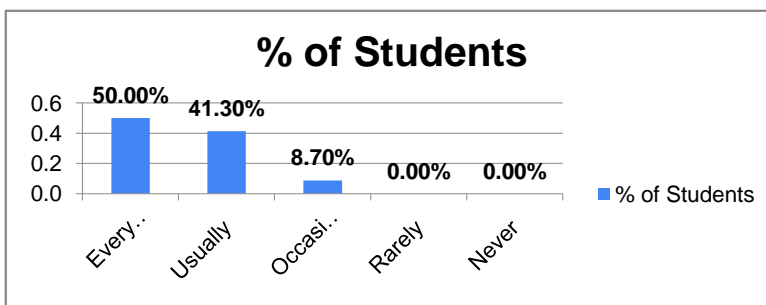
Ratings	% of Students
Strongly agree	45.65%
Agree	45.65%
Neutral	8.70%
Disagree	0.00%
Strongly disagree	0.00%



<b>% Satisfaction</b>
<b>91.30%</b>
<b>Remark</b>
<b>Excellent</b>

10. Teachers inform you about your expected competencies, course outcomes and programme outcomes and review the course syllabus in the class.

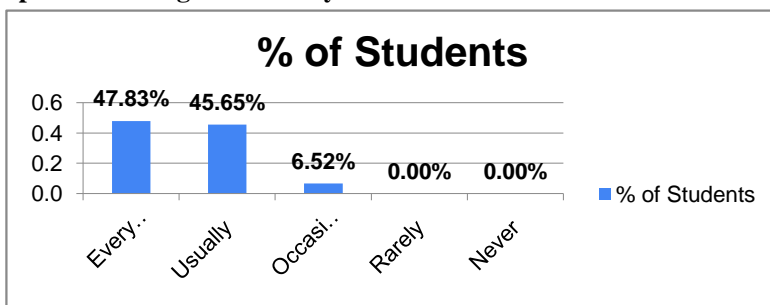
Ratings	% of Students
Every time	50.00%
Usually	41.30%
Occasionally/Sometimes	8.70%
Rarely	0.00%
Never	0.00%



<b>% Satisfaction</b>
<b>91.30%</b>
<b>Remark</b>
<b>Excellent</b>

11. Your mentor does a necessary follow-up with an assigned task to you.

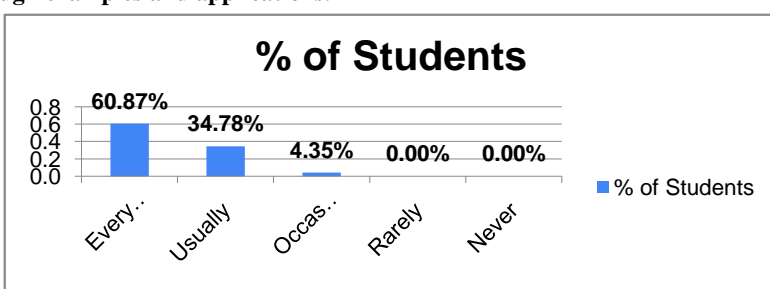
Ratings	% of Students
Every time	47.83%
Usually	45.65%
Occasionally/Sometimes	6.52%
Rarely	0.00%
Never	0.00%



<b>% Satisfaction</b>
<b>93.48%</b>
<b>Remark</b>
<b>Excellent</b>

12. The teachers illustrate the concepts through examples and applications.

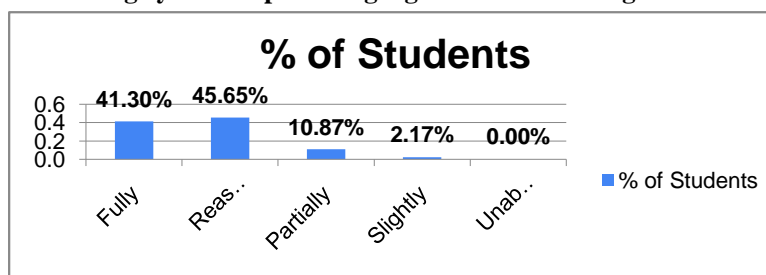
Ratings	% of Students
Every time	60.87%
Usually	34.78%
Occasionally/Sometimes	4.35%
Rarely	0.00%
Never	0.00%



<b>% Satisfaction</b>
<b>95.65%</b>
<b>Remark</b>
<b>Excellent</b>

13. The teachers identify your strengths and encourage you with providing right level of challenges.

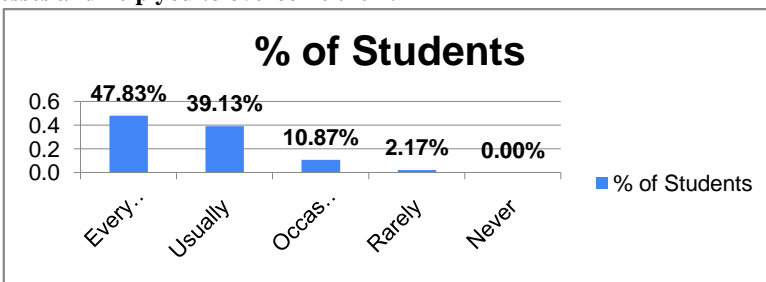
Ratings	% of Students
Fully	41.30%
Reasonably	45.65%
Partially	10.87%
Slightly	2.17%
Unable to	0.00%



<b>% Satisfaction</b>
<b>86.96%</b>
<b>Remark</b>
<b>Excellent</b>

14. Teachers are able to identify your weaknesses and help you to overcome them.

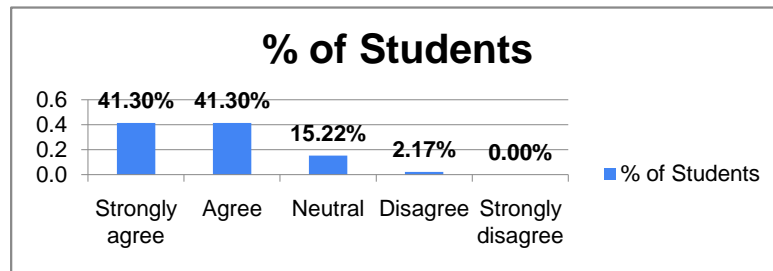
Ratings	% of Students
Every time	47.83%
Usually	39.13%
Occasionally/Sometimes	10.87%
Rarely	2.17%
Never	0.00%



<b>% Satisfaction</b>
<b>86.96%</b>
<b>Remark</b>
<b>Excellent</b>

**15. The institution makes effort to engage students in the monitoring, review and continuous quality improvement of the**

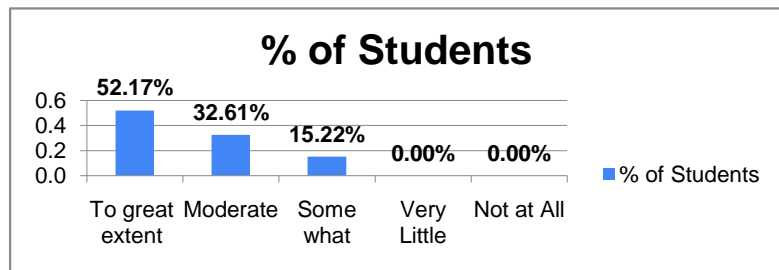
Ratings	% of Students
Strongly agree	41.30%
Agree	41.30%
Neutral	15.22%
Disagree	2.17%
Strongly disagree	0.00%



% Satisfaction	82.61%
Remark	Very Good

**16. The institute/ teachers use student centric methods, such as experiential learning, participative learning and problem solving methodologies for enhancing learning experiences.**

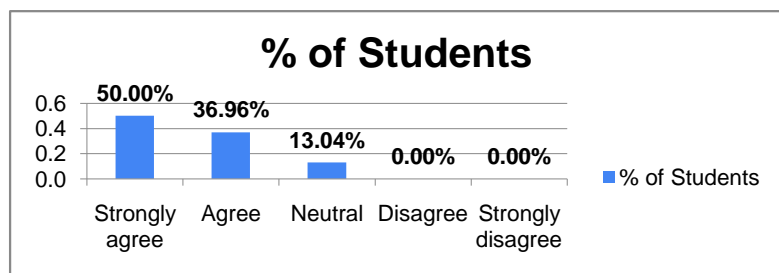
Ratings	% of Students
To great extent	52.17%
Moderate	32.61%
Some what	15.22%
Very Little	0.00%
Not at All	0.00%



% Satisfaction	84.78%
Remark	Very Good

**17. Teachers encourage you to participate in extracurricular activities**

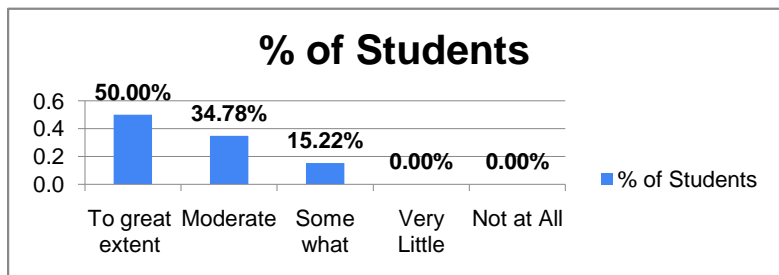
Ratings	% of Students
Strongly agree	50.00%
Agree	36.96%
Neutral	13.04%
Disagree	0.00%
Strongly disagree	0.00%



% Satisfaction	86.96%
Remark	Excellent

**18. Efforts are made by the institute/ teachers to inculcate soft skills, life skills and employability skills to make you ready for the world of work.**

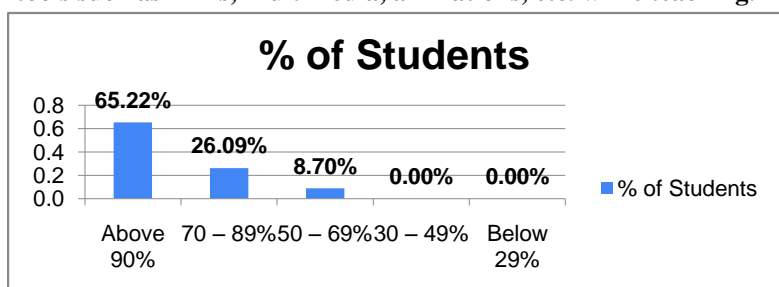
Ratings	% of Students
To great extent	50.00%
Moderate	34.78%
Some what	15.22%
Very Little	0.00%
Not at All	0.00%



% Satisfaction	84.78%
Remark	Very Good

**19. What percentage of teachers uses ICT tools such as PPTs, Multimedia, animations, etc. while teaching.**

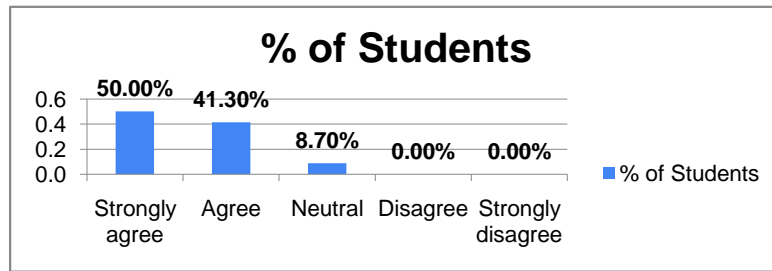
Ratings	% of Students
Above 90%	65.22%
70 – 89%	26.09%
50 – 69%	8.70%
30 – 49%	0.00%
Below 29%	0.00%



% Satisfaction	91.30%
Remark	Excellent

20. The overall quality of teaching-learning process in your institute is very good.

Ratings	% of Students
Strongly agree	50.00%
Agree	41.30%
Neutral	8.70%
Disagree	0.00%
Strongly disagree	0.00%



% Satisfaction
91.30%
Remark
Excellent

Feedback Incharge

Head of Department