



Session:2020-21(ODD)

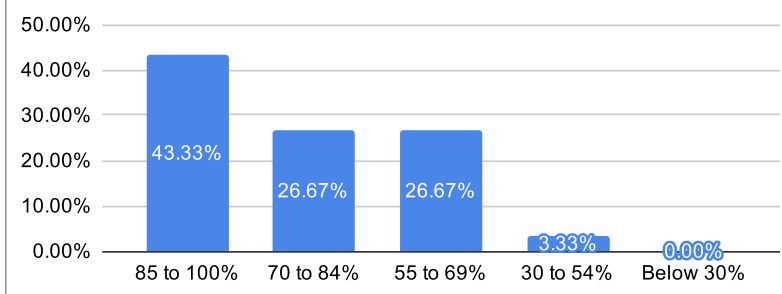
Student Satisfaction Survey Part A (Teaching Learning) Feedback Analysis

Semester: 5th Semester

Number of Students participated: 30

1. How much of the syllabus was covered in the class?

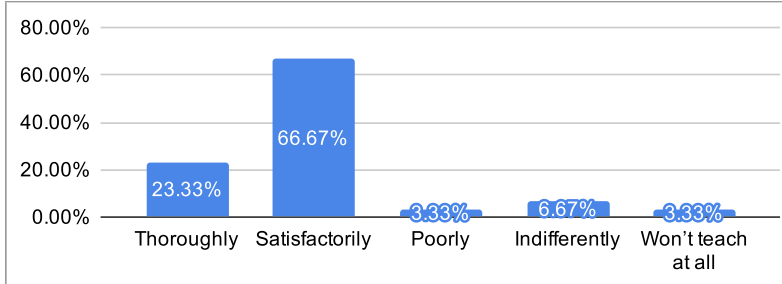
% of Syllabus	% of Students
85 to 100%	43.33%
70 to 84%	26.67%
55 to 69%	26.67%
30 to 54%	3.33%
Below 30%	0.00%



% Satisfaction
70.00%
Remark
Very Good

2. How well did the teachers prepare for the classes?

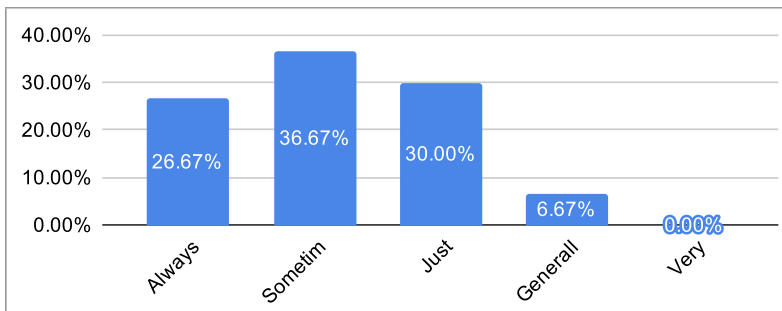
Ratings	% of Students
Thoroughly	23.33%
Satisfactorily	66.67%
Poorly	3.33%
Indifferently	6.67%
Won't teach at all	3.33%



% Satisfaction
90.00%
Remark
Excellent

3. How well were the teachers able to communicate?

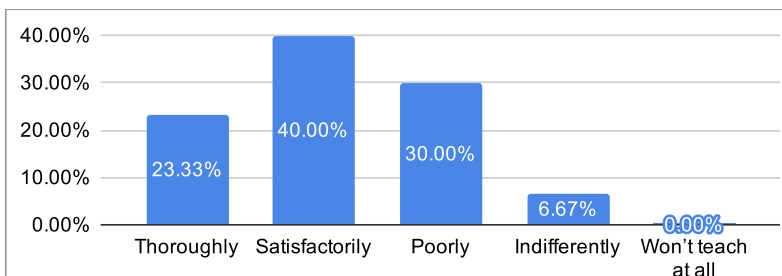
Ratings	% of Students
Always effective	26.67%
Sometimes effective	36.67%
Just satisfactorily	30.00%
Generally ineffective	6.67%
Very poor communication	0.00%



% Satisfaction
63.33%
Remark
Good

4. The teacher's approach to teaching can best be described as

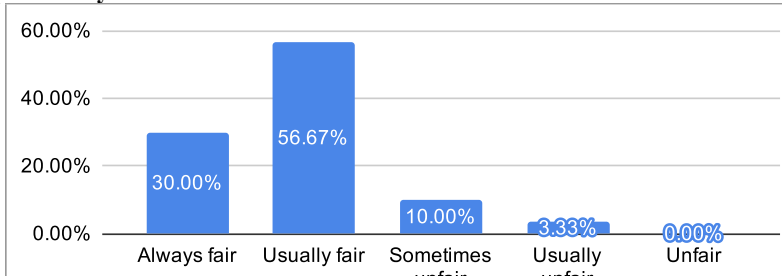
Ratings	% of Students
Thoroughly	23.33%
Satisfactorily	40.00%
Poorly	30.00%
Indifferently	6.67%
Won't teach at all	0.00%



% Satisfaction
63.33%
Remark
Good

5. Fairness of the internal evaluation process by the teachers.

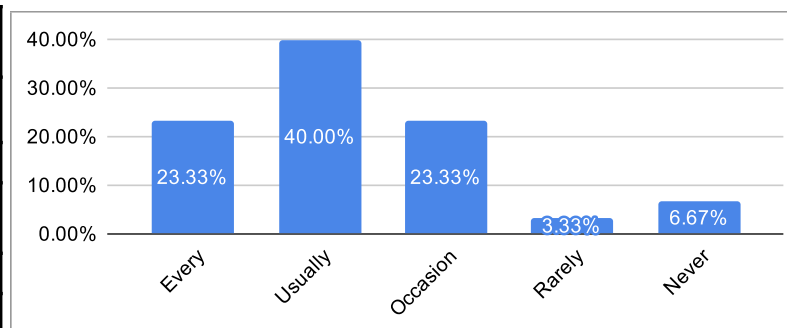
Ratings	% of Students
Always fair	30.00%
Usually fair	56.67%
Sometimes unfair	10.00%
Usually unfair	3.33%
Unfair	0.00%



% Satisfaction
86.67%
Remark
Excellent

6. Was your performance in assignments discussed with you?

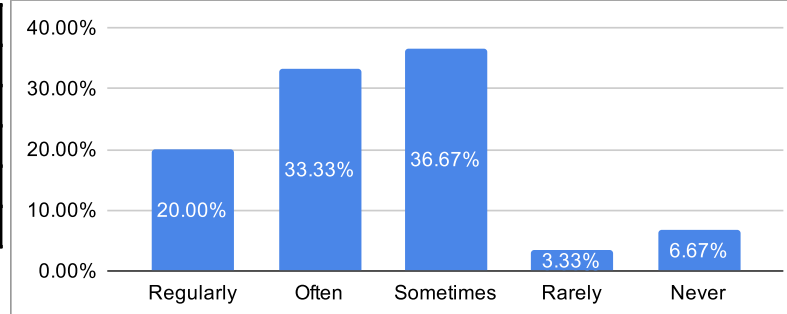
Ratings	% of Students
Every time	23.33%
Usually	40.00%
Occasionally/Sometimes	23.33%
Rarely	3.33%
Never	6.67%



% Satisfaction
63.33%
Remark
Good

7. The institute takes active interest in promoting internship opportunities for students.

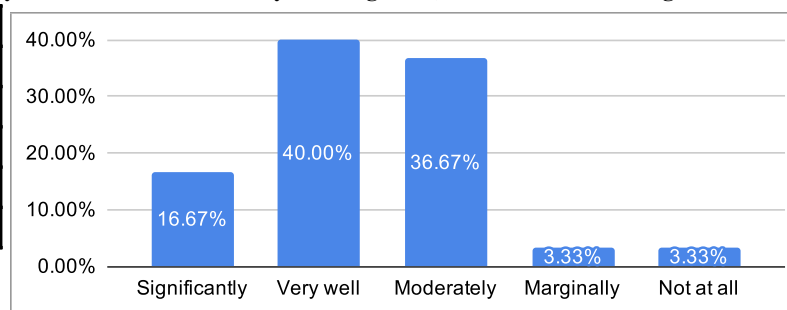
Ratings	% of Students
Regularly	20.00%
Often	33.33%
Sometimes	36.67%
Rarely	3.33%
Never	6.67%



% Satisfaction
53.33%
Remark
Fair

8 The teaching and mentoring process in your institution facilitates you in cognitive, social and emotional growth.

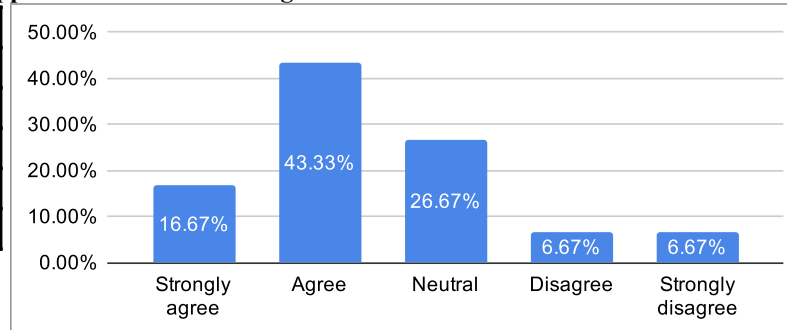
Ratings	% of Students
Significantly	16.67%
Very well	40.00%
Moderately	36.67%
Marginally	3.33%
Not at all	3.33%



% Satisfaction
56.67%
Remark
Good

9. The institution provides multiple opportunities to learn and grow.

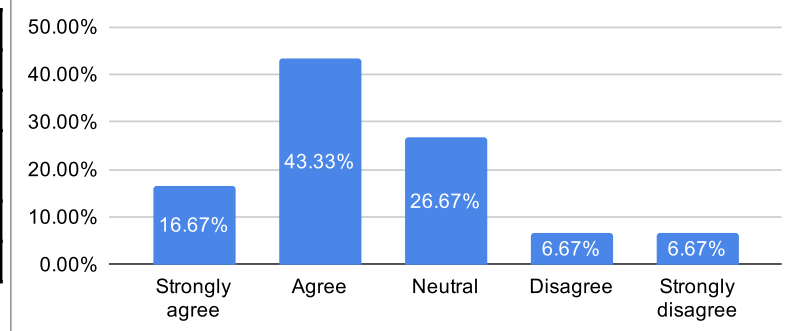
Ratings	% of Students
Strongly agree	16.67%
Agree	43.33%
Neutral	26.67%
Disagree	6.67%
Strongly disagree	6.67%



% Satisfaction
60.00%
Remark
Good

10. Teachers inform you about your expected competencies, course outcomes and programme outcomes and review the course syllabus in the class.

Ratings	% of Students
Every time	26.67%
Usually	40.00%
Occasionally/Sometimes	23.33%
Rarely	3.33%
Never	6.67%



% Satisfaction
66.67%
Remark
Good

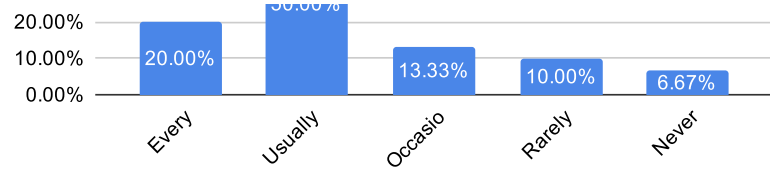
11. Your mentor does a necessary follow-up with an assigned task to you.

Ratings	% of Students
Every time	20.00%
Usually	50.00%



% Satisfaction
70.00%

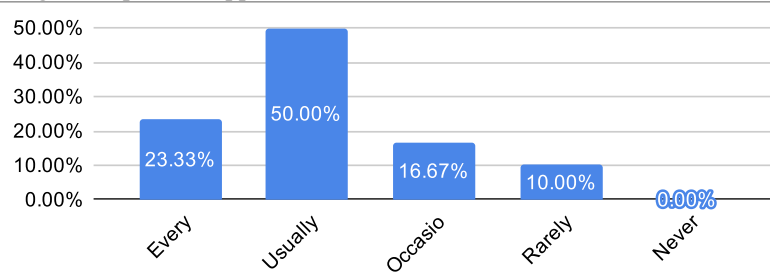
Occasionally/Sometimes	13.33%
Rarely	10.00%
Never	6.67%



Remark
Very Good

12. The teachers illustrate the concepts through examples and applications.

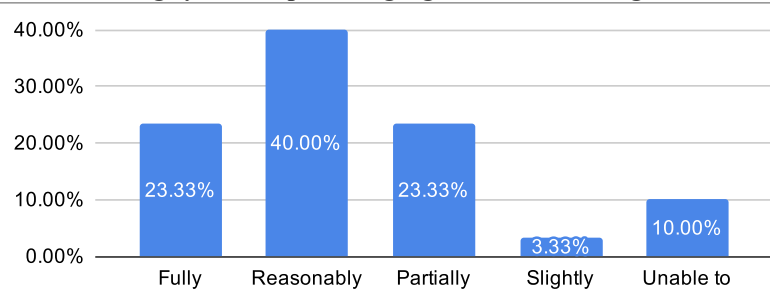
Ratings	% of Students
Every time	23.33%
Usually	50.00%
Occasionally/Sometimes	16.67%
Rarely	10.00%
Never	0.00%



% Satisfaction
73.33%
Remark
Very Good

13. The teachers identify your strengths and encourage you with providing right level of challenges.

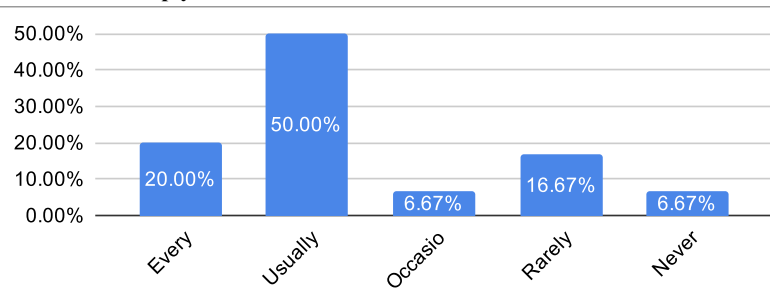
Ratings	% of Students
Fully	23.33%
Reasonably	40.00%
Partially	23.33%
Slightly	3.33%
Unable to	10.00%



% Satisfaction
63.33%
Remark
Good

14. Teachers are able to identify your weaknesses and help you to overcome them.

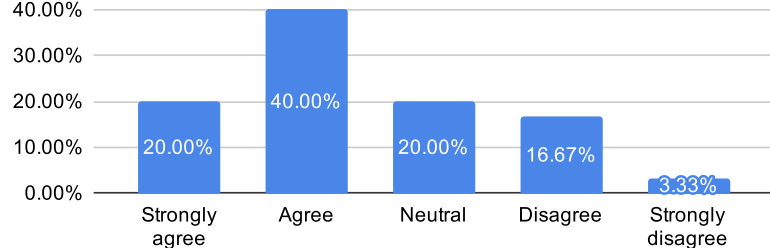
Ratings	% of Students
Every time	20.00%
Usually	50.00%
Occasionally/Sometimes	6.67%
Rarely	16.67%
Never	6.67%



% Satisfaction
70.00%
Remark
Very Good

15. The institution makes effort to engage students in the monitoring, review and continuous quality improvement of the teaching learning process

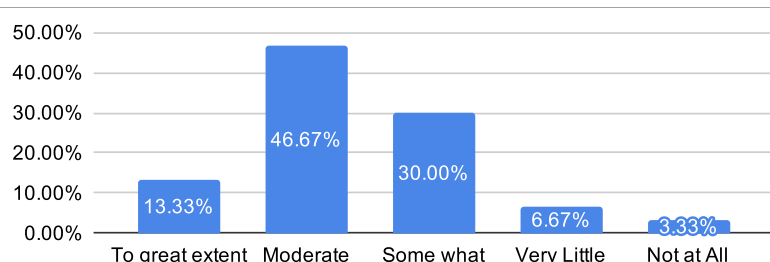
Ratings	% of Students
Strongly agree	20.00%
Agree	40.00%
Neutral	20.00%
Disagree	16.67%
Strongly disagree	3.33%



% Satisfaction
60.00%
Remark
Good

16. The institute/ teachers use student centric methods, such as experiential learning, participative learning and problem solving methodologies for enhancing learning experiences.

Ratings	% of Students
To great extent	13.33%
Moderate	46.67%
Some what	30.00%
Very Little	6.67%
Not at All	3.33%



% Satisfaction
60.00%
Remark
Good

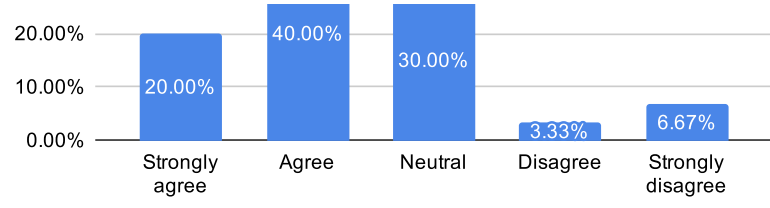
17. Teachers encourage you to participate in extracurricular activities

Ratings	% of Students
Strongly agree	20.00%



% Satisfaction

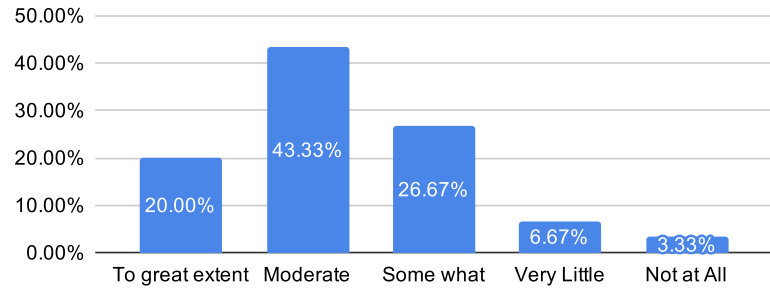
Agree	40.00%
Neutral	30.00%
Disagree	3.33%
Strongly disagree	6.67%



60.00%
Remark
Good

18. Efforts are made by the institute/ teachers to inculcate soft skills, life skills and employability skills to make you ready for the world of work.

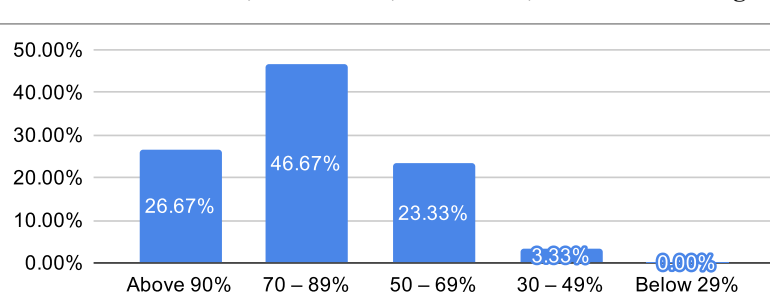
Ratings	% of Students
To great extent	20.00%
Moderate	43.33%
Some what	26.67%
Very Little	6.67%
Not at All	3.33%



% Satisfaction
63.33%
Remark
Good

19. What percentage of teachers uses ICT tools such as PPTs, Multimedia, animations, etc. while teaching.

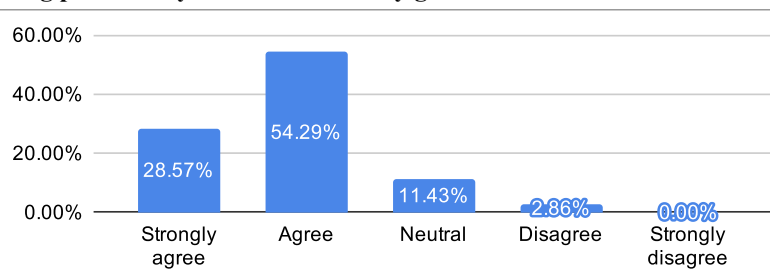
Ratings	% of Students
Above 90%	26.67%
70 – 89%	46.67%
50 – 69%	23.33%
30 – 49%	3.33%
Below 29%	0.00%



% Satisfaction
73.33%
Remark
Very Good

20. The overall quality of teaching-learning process in your institute is very good.

Ratings	% of Students
Strongly agree	28.57%
Agree	54.29%
Neutral	11.43%
Disagree	2.86%
Strongly disagree	0.00%



% Satisfaction
82.86%
Remark
Very Good

Feedback Incharge

Head of Department