



S. B. JAIN INSTITUTE OF TECHNOLOGY, MANAGEMENT & RESEARCH, NAGPUR.

(An Autonomous Institute, Affiliated to RTMNU, Nagpur)

DEPARTMENT OF COMPUTER SCIENCE & ENGINEERING

To become a center for quality education in the field of Computer Science & Engineering and to create competent professionals.



Session:2020-21(EVEN)

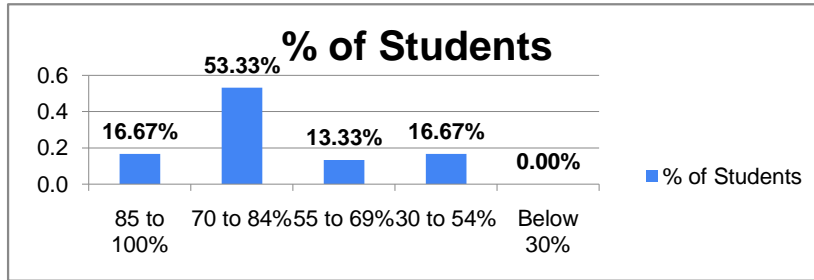
Student Satisfaction Survey Part A (Teaching Learning) Feedback Analysis

Semester: 6th Semester

Number of Students participated: 30

1. How much of the syllabus was covered in the class?

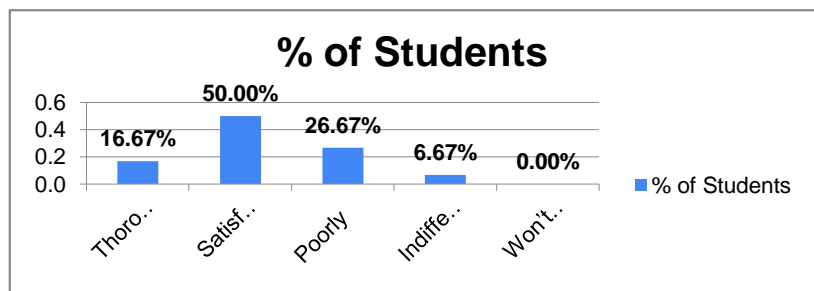
% of Syllabus	% of Students
85 to 100%	16.67%
70 to 84%	53.33%
55 to 69%	13.33%
30 to 54%	16.67%
Below 30%	0.00%



%
70.00%
Remark
Very Good

2. How well did the teachers prepare for the classes?

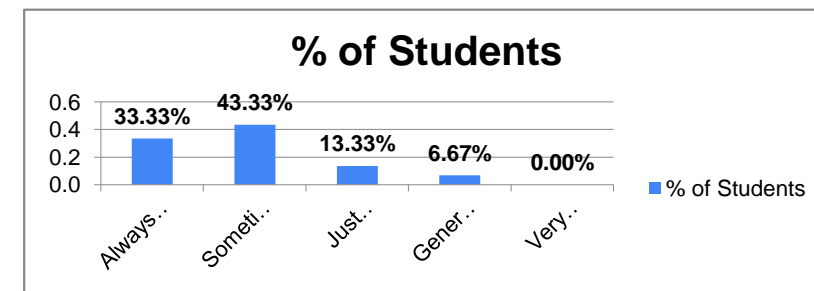
Ratings	% of Students
Thoroughly	16.67%
Satisfactorily	50.00%
Poorly	26.67%
Indifferently	6.67%
Won't teach at all	0.00%



%
66.67%
Remark
Good

3. How well were the teachers able to communicate?

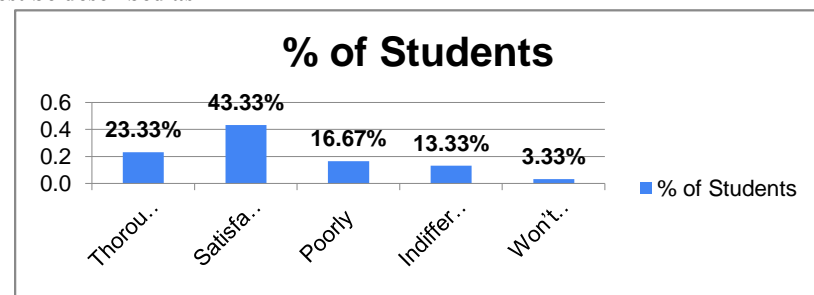
Ratings	% of Students
Always effective	33.33%
Sometimes effective	43.33%
Just satisfactorily	13.33%
Generally ineffective	6.67%
Very poor communication	0.00%



%
76.67%
Remark
Very Good

4. The teacher's approach to teaching can best be described as

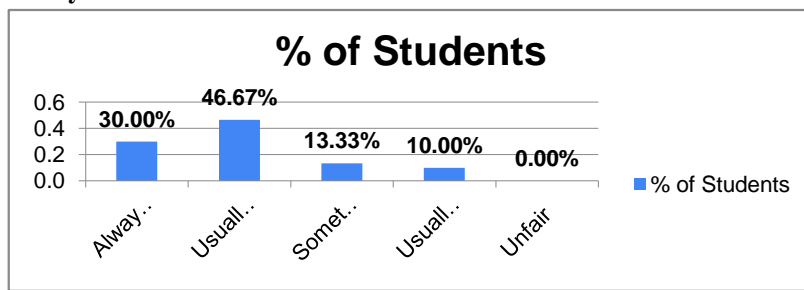
Ratings	% of Students
Thoroughly	23.33%
Satisfactorily	43.33%
Poorly	16.67%
Indifferently	13.33%
Won't teach at all	3.33%



% Satisfaction
66.67%
Remark
Good

5. Fairness of the internal evaluation process by the teachers.

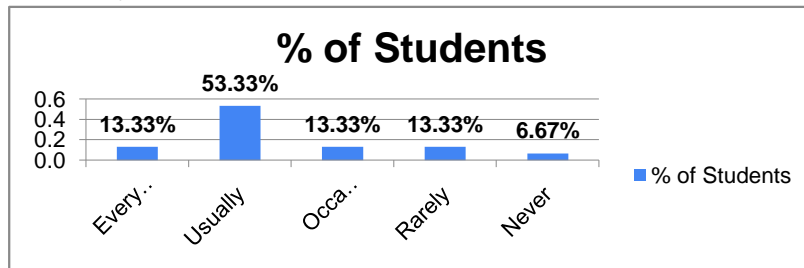
Ratings	% of Students
Always fair	30.00%
Usually fair	46.67%
Sometimes unfair	13.33%
Usually unfair	10.00%
Unfair	0.00%



% Satisfaction
76.67%
Remark
Very Good

6. Was your performance in assignments discussed with you?

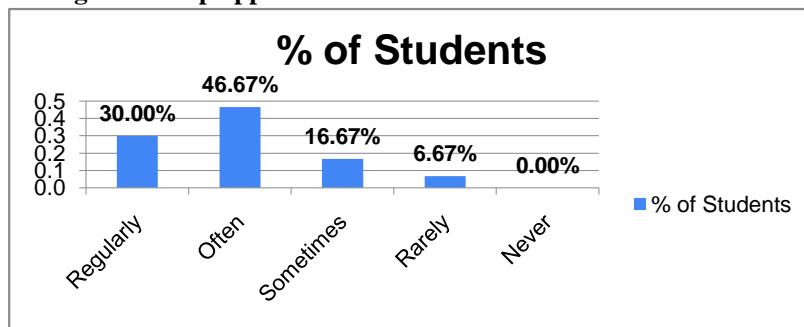
Ratings	% of Students
Every time	13.33%
Usually	53.33%
Occasionally/Sometimes	13.33%
Rarely	13.33%
Never	6.67%



% Satisfaction
66.67%
Remark
Good

7. The institute takes active interest in promoting internship opportunities for students.

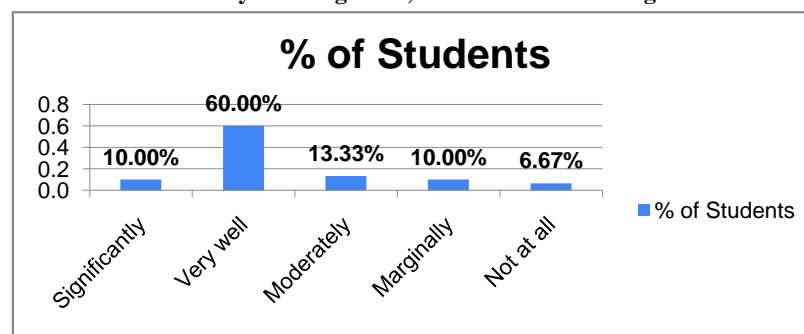
Ratings	% of Students
Regularly	30.00%
Often	46.67%
Sometimes	16.67%
Rarely	6.67%
Never	0.00%



% Satisfaction
76.67%
Remark
Very Good

8 The teaching and mentoring process in your institution facilitates you in cognitive, social and emotional growth.

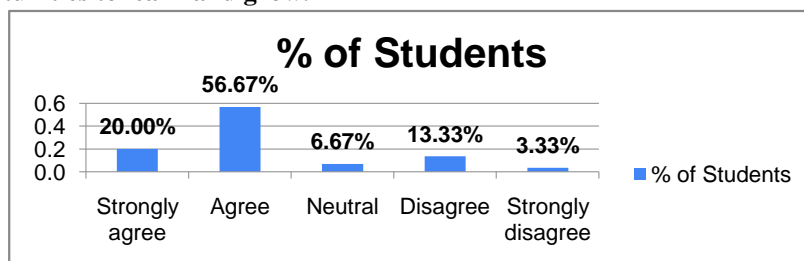
Ratings	% of Students
Significantly	10.00%
Very well	60.00%
Moderately	13.33%
Marginally	10.00%
Not at all	6.67%



% Satisfaction
70.00%
Remark
Very Good

9. The institution provides multiple opportunities to learn and grow.

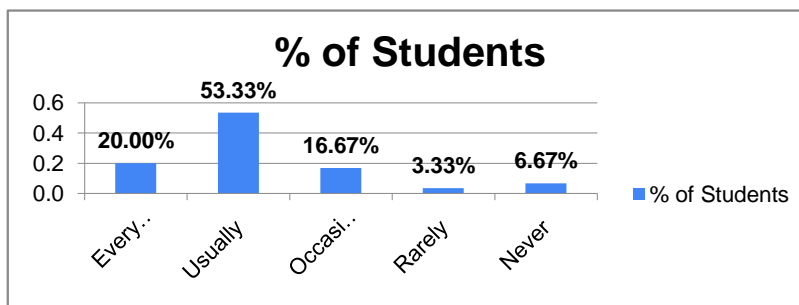
Ratings	% of Students
Strongly agree	20.00%
Agree	56.67%
Neutral	6.67%
Disagree	13.33%
Strongly disagree	3.33%



% Satisfaction
76.67%
Remark
Very Good

10. Teachers inform you about your expected competencies, course outcomes and programme outcomes and review the course syllabus in the class.

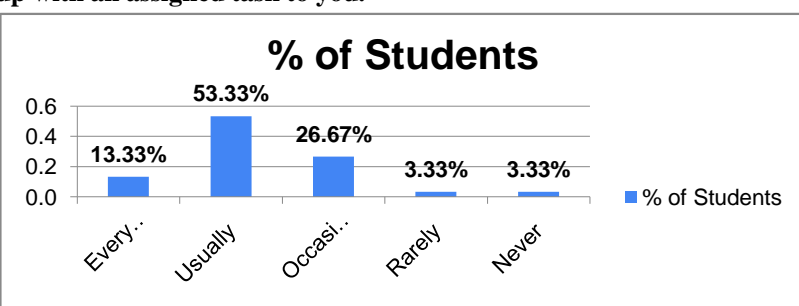
Ratings	% of Students
Every time	20.00%
Usually	53.33%
Occasionally/Sometimes	16.67%
Rarely	3.33%
Never	6.67%



% Satisfaction
73.33%
Remark
Very Good

11. Your mentor does a necessary follow-up with an assigned task to you.

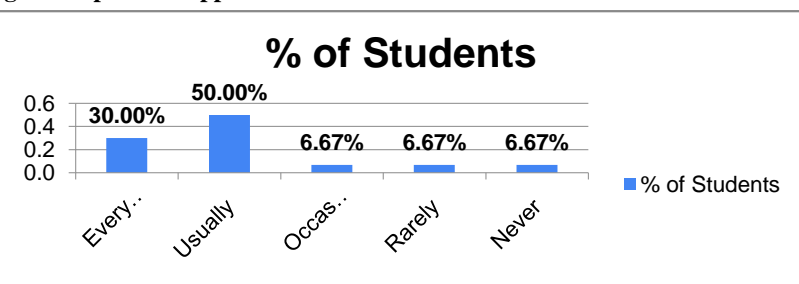
Ratings	% of Students
Every time	13.33%
Usually	53.33%
Occasionally/Sometimes	26.67%
Rarely	3.33%
Never	3.33%



% Satisfaction
66.67%
Remark
Good

12. The teachers illustrate the concepts through examples and applications.

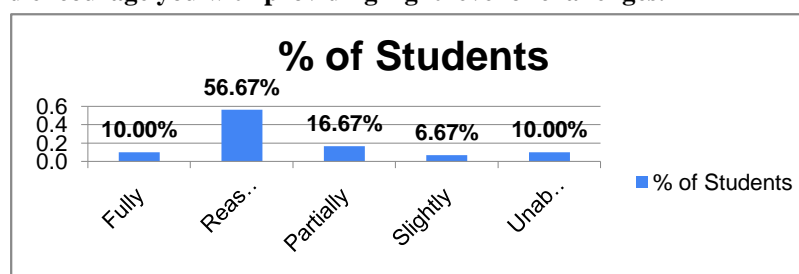
Ratings	% of Students
Every time	30.00%
Usually	50.00%
Occasionally/Sometimes	6.67%
Rarely	6.67%
Never	6.67%



% Satisfaction
80.00%
Remark
Very Good

13. The teachers identify your strengths and encourage you with providing right level of challenges.

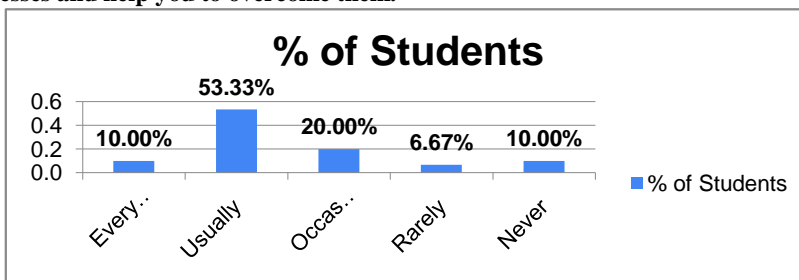
Ratings	% of Students
Fully	10.00%
Reasonably	56.67%
Partially	16.67%
Slightly	6.67%
Unable to	10.00%



% Satisfaction
66.67%
Remark
Good

14. Teachers are able to identify your weaknesses and help you to overcome them.

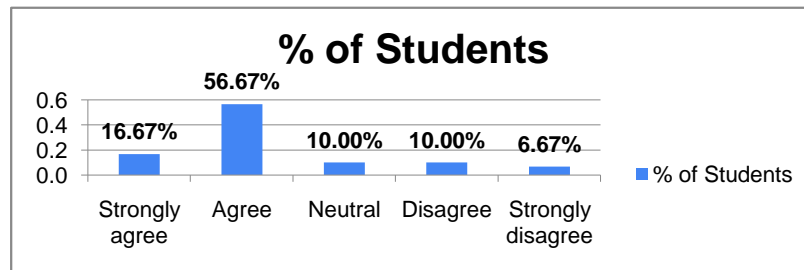
Ratings	% of Students
Every time	10.00%
Usually	53.33%
Occasionally/Sometimes	20.00%
Rarely	6.67%
Never	10.00%



% Satisfaction
63.33%
Remark
Good

15. The institution makes effort to engage students in the monitoring, review and continuous quality improvement of the

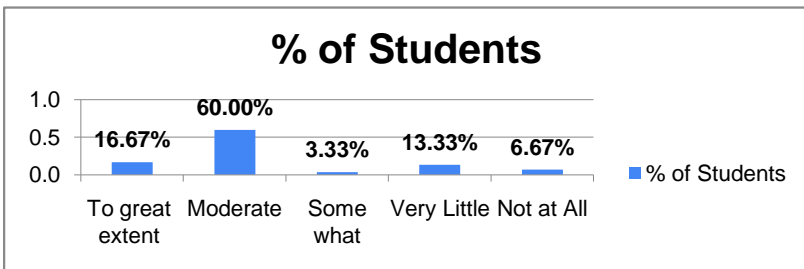
Ratings	% of Students
Strongly agree	16.67%
Agree	56.67%
Neutral	10.00%
Disagree	10.00%
Strongly disagree	6.67%



% Satisfaction
73.33%
Remark
Very Good

16. The institute/ teachers use student centric methods, such as experiential learning, participative learning and problem solving methodologies for enhancing learning experiences.

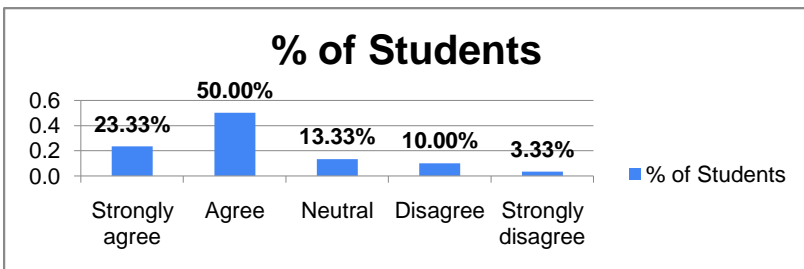
Ratings	% of Students
To great extent	16.67%
Moderate	60.00%
Some what	3.33%
Very Little	13.33%
Not at All	6.67%



% Satisfaction
76.67%
Remark
Very Good

17. Teachers encourage you to participate in extracurricular activities

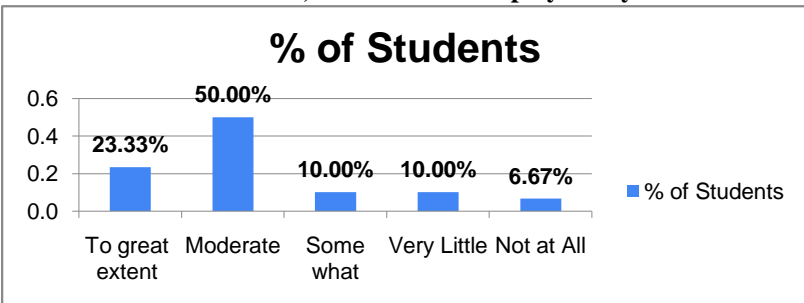
Ratings	% of Students
Strongly agree	23.33%
Agree	50.00%
Neutral	13.33%
Disagree	10.00%
Strongly disagree	3.33%



% Satisfaction
73.33%
Remark
Very Good

18. Efforts are made by the institute/ teachers to inculcate soft skills, life skills and employability skills to make you ready for the world of work.

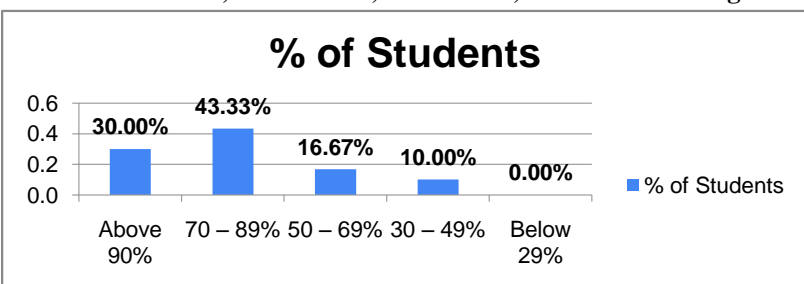
Ratings	% of Students
To great extent	23.33%
Moderate	50.00%
Some what	10.00%
Very Little	10.00%
Not at All	6.67%



% Satisfaction
73.33%
Remark
Very Good

19. What percentage of teachers uses ICT tools such as PPTs, Multimedia, animations, etc. while teaching.

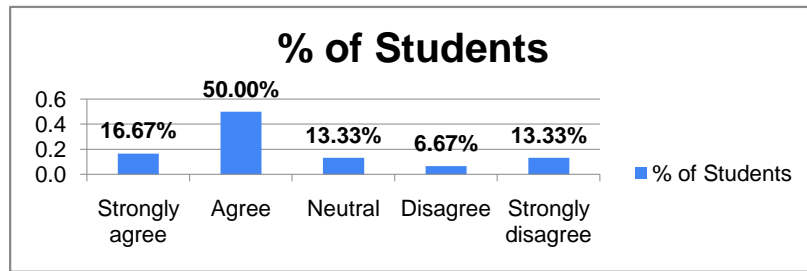
Ratings	% of Students
Above 90%	30.00%
70 – 89%	43.33%
50 – 69%	16.67%
30 – 49%	10.00%
Below 29%	0.00%



% Satisfaction
73.33%
Remark
Very Good

20. The overall quality of teaching-learning process in your institute is very good.

Ratings	% of Students
Strongly agree	16.67%
Agree	50.00%
Neutral	13.33%
Disagree	6.67%
Strongly disagree	13.33%



% Satisfaction
66.67%
Remark
Good

Feedback Incharge

Head of Department