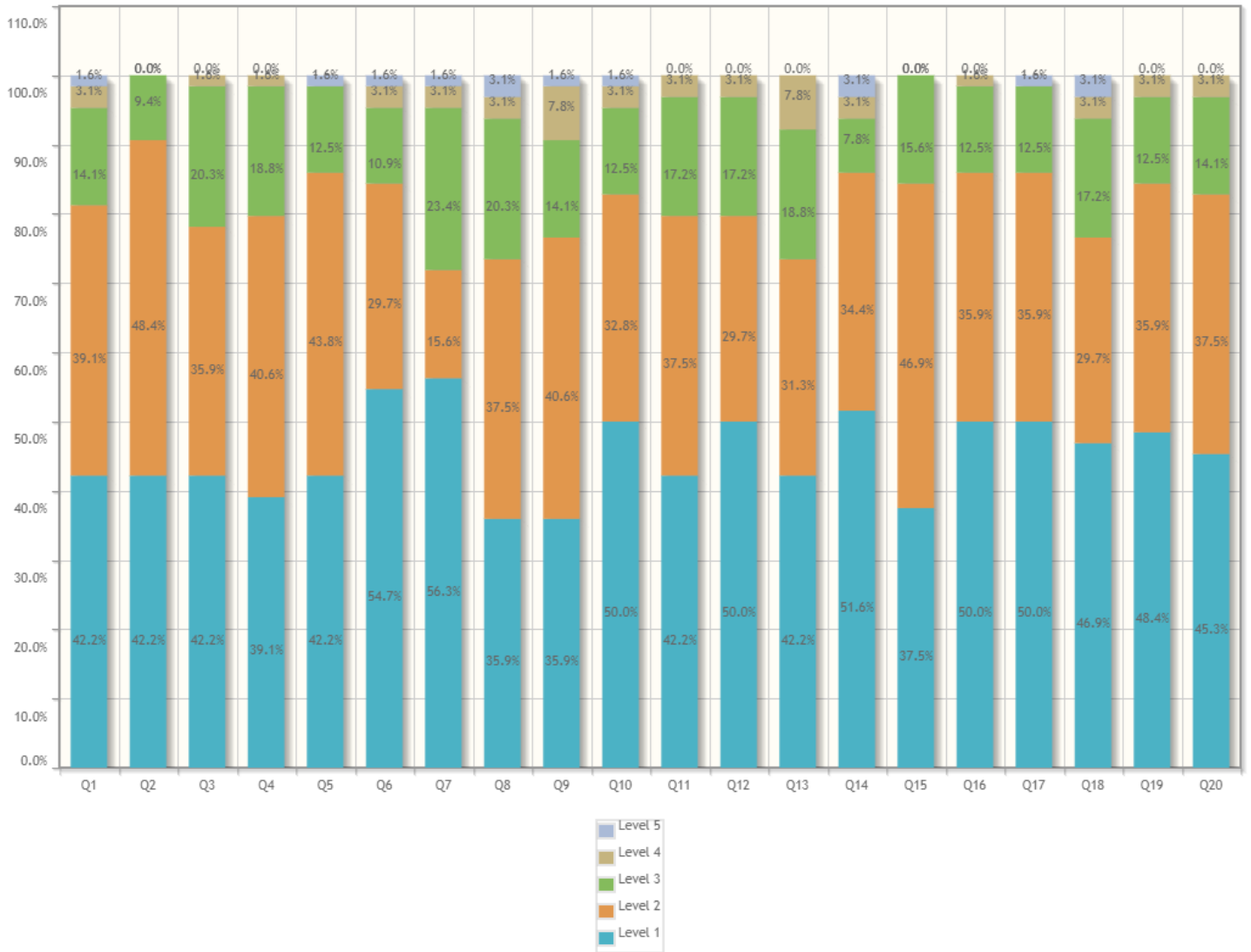




### Survey Details - Detailed & Summary Graphs

<b>Survey:</b> 22-23 EVEN IV SSS TLP	<b>Survey Type:</b> Fresh Survey
<b>Survey For:</b> Facility Feedback	<b>Program:</b> B.Tech. Electrical Engineering in Electrical Engineering

#### Detailed Graph



### Survey Details - Detailed & Summary Graphs

<b>Survey:</b> 22-23 EVEN IV SSS IFS	<b>Survey Type:</b> Fresh Survey
<b>Survey For:</b> Facility Feedback	<b>Program:</b> B.Tech. Electrical Engineering in Electrical Engineering

#### Detailed Graph



## Summary Report

Number of people Responded / Total number of Responders is **64 / 70** People.

Questions	Total Response Count	Weighted Response Percent
How much of the syllabus was covered in the class?	267	83.44%
How well did the teachers prepare for the classes?	277	86.56%
How well were the teachers able to communicate?	268	83.75%
The teacher's approach to teaching can best be described as	267	83.44%
Fairness of the internal evaluation process by the teachers.	272	85.00%
Was your performance in assignments discussed with you?	277	86.56%
The institute takes active interest in promoting internship opportunities for students.	270	84.38%
The teaching and mentoring process in your institution facilitates you in cognitive, social and emotional growth.	256	80.00%
The institution provides multiple opportunities to learn and grow.	257	80.31%
Teachers inform you about your expected competencies, course outcomes and programme outcomes and review the course syllabus in the class.	273	85.31%
Your mentor does a necessary follow-up with an assigned task to you.	268	83.75%
The teachers illustrate the concepts through examples and applications.	273	85.31%
The teachers identify your strengths and encourage you with providing right level of challenges.	261	81.56%
Teachers are able to identify your weaknesses and help you to overcome them.	274	85.63%
The institution makes effort to engage students in the monitoring, review and continuous quality improvement of the teaching learning process.	270	84.38%
The institute/ teachers use student centric methods, such as experiential learning, participative learning and problem solving methodologies for enhancing learning experiences.	278	86.88%
Teachers encourage you to participate in extracurricular activities.	277	86.56%
Efforts are made by the institute/ teachers to inculcate soft skills, life skills and employability skills to make you ready for the world of work.	265	82.81%





## Summary Report

Number of people Responded / Total number of Responders is **64 / 70** People.

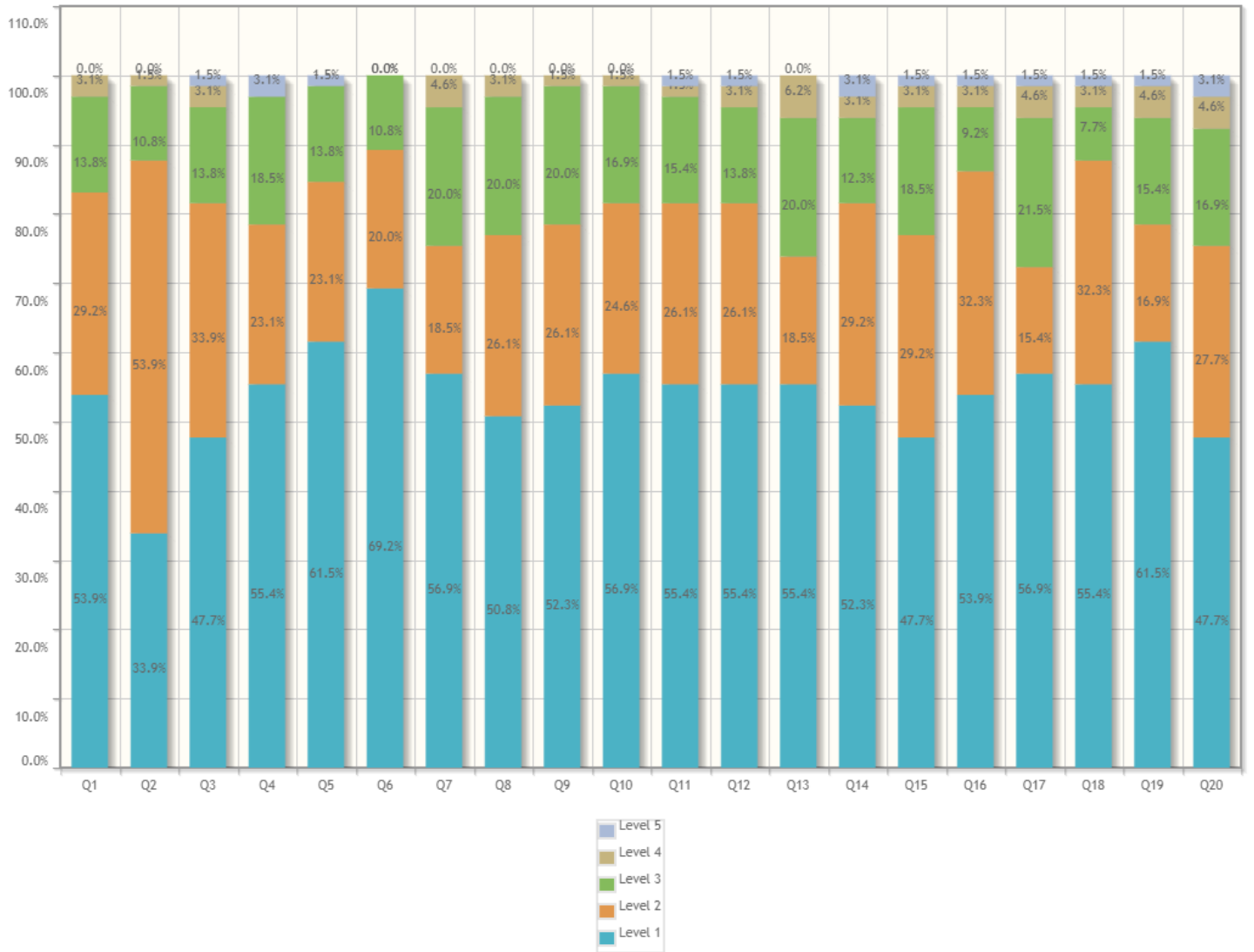
Questions	Total Response Count	Weighted Response Percent
Adequacy of Laboratory facilities (Number of set-ups/ equipments /tools etc.)	251	78.44%
Mechanism and approach to provide exposure to external world through Internships, Field Visits, Guest Lectures, Expert Talks etc.	253	79.06%
Infrastructure (Furniture/Black Board / Illumination/Ventilation etc.)	244	76.25%
Mechanism and approach to deal with students/parents grievances	250	78.13%
Students guidance and mentoring facilities	242	75.63%
Support for co-curricular and extra-curricular activities	242	75.63%
Library Facility	251	78.44%
Sports Facility	234	73.13%
Canteen Facility	246	76.88%
Transport Facility	231	72.19%
Internet Facility	238	74.38%
Housekeeping	248	77.50%
First Aid Facility	245	76.56%
Security Facility	243	75.94%
Total Feedback	3418	76.29%



### Survey Details - Detailed & Summary Graphs

<b>Survey:</b> 22-23 EVEN VI SSS TLP	<b>Survey Type:</b> Fresh Survey
<b>Survey For:</b> Facility Feedback	<b>Program:</b> B.Tech. Electrical Engineering in Electrical Engineering

#### Detailed Graph





## Survey Details - Detailed & Summary Graphs

<b>Survey:</b> 22-23 EVEN VI SSS IFS	<b>Survey Type:</b> Fresh Survey
<b>Survey For:</b> Facility Feedback	<b>Program:</b> B.Tech. Electrical Engineering in Electrical Engineering

### Detailed Graph





## Summary Report

Number of people Responded / Total number of Responders is **65 / 68** People.

Questions	Total Response Count	Weighted Response Percent
How much of the syllabus was covered in the class?	282	86.77%
How well did the teachers prepare for the classes?	273	84.00%
How well were the teachers able to communicate?	275	84.62%
The teacher's approach to teaching can best be described as	278	85.54%
Fairness of the internal evaluation process by the teachers.	288	88.62%
Was your performance in assignments discussed with you?	298	91.69%
The institute takes active interest in promoting internship opportunities for students.	278	85.54%
The teaching and mentoring process in your institution facilitates you in cognitive, social and emotional growth.	276	84.92%
The institution provides multiple opportunities to learn and grow.	279	85.85%
Teachers inform you about your expected competencies, course outcomes and programme outcomes and review the course syllabus in the class.	284	87.38%
Your mentor does a necessary follow-up with an assigned task to you.	281	86.46%
The teachers illustrate the concepts through examples and applications.	280	86.15%
The teachers identify your strengths and encourage you with providing right level of challenges.	275	84.62%
Teachers are able to identify your weaknesses and help you to overcome them.	276	84.92%
The institution makes effort to engage students in the monitoring, review and continuous quality improvement of the teaching learning process.	272	83.69%
The institute/ teachers use student centric methods, such as experiential learning, participative learning and problem solving methodologies for enhancing learning experiences.	282	86.77%
Teachers encourage you to participate in extracurricular activities.	274	84.31%
Efforts are made by the institute/ teachers to inculcate soft skills, life skills and employability skills to make you ready for the world of work.	284	87.38%







## Summary Report

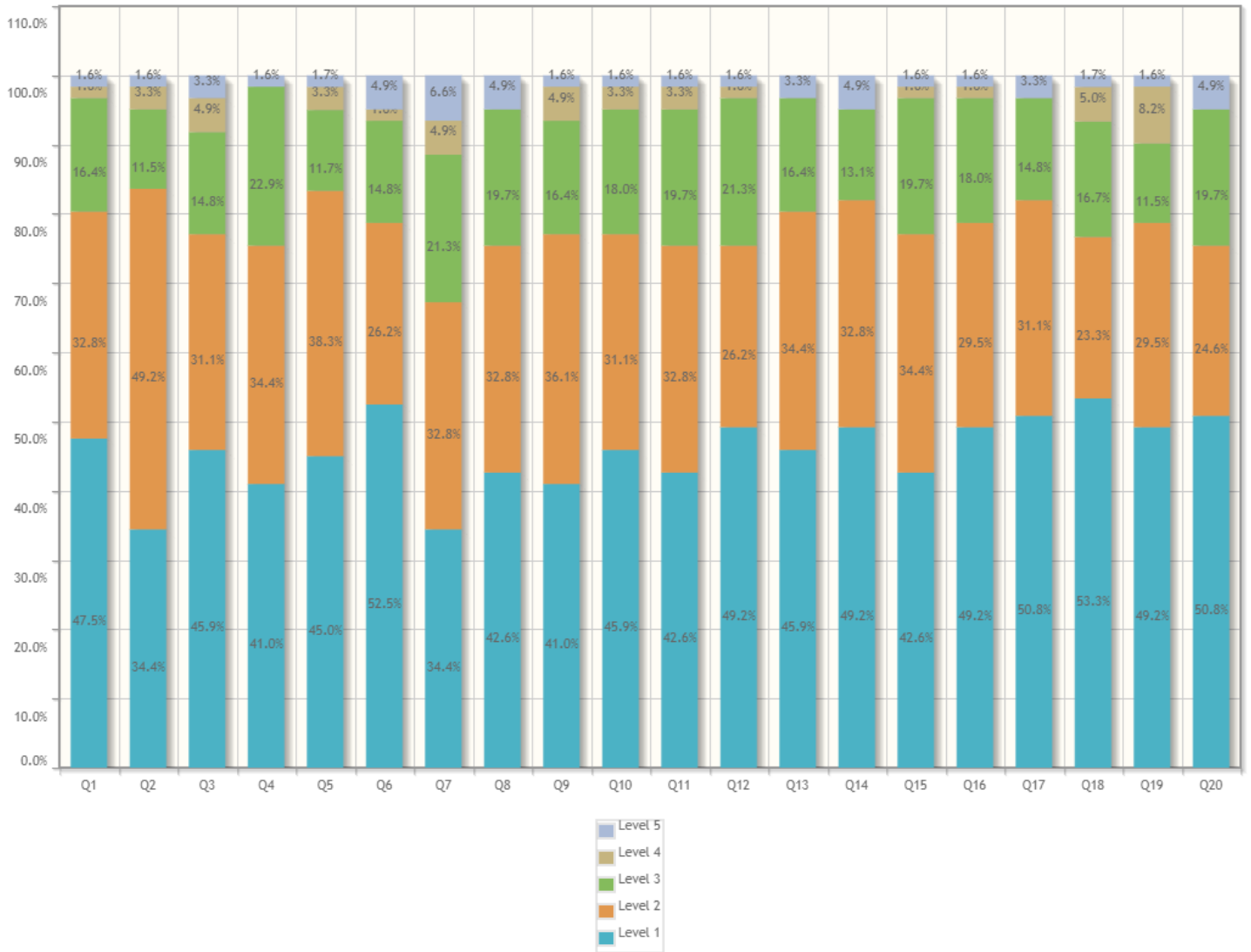
Number of people Responded / Total number of Responders is **65 / 68** People.

Questions	Total Response Count	Weighted Response Percent
Adequacy of Laboratory facilities (Number of set-ups/ equipments /tools etc.)	266	81.85%
Mechanism and approach to provide exposure to external world through Internships, Field Visits, Guest Lectures, Expert Talks etc.	257	79.08%
Infrastructure (Furniture/Black Board / Illumination/Ventilation etc.)	262	80.62%
Mechanism and approach to deal with students/parents grievances	261	80.31%
Students guidance and mentoring facilities	258	79.38%
Support for co-curricular and extra-curricular activities	262	80.62%
Library Facility	262	80.62%
Sports Facility	249	76.62%
Canteen Facility	254	78.15%
Transport Facility	246	75.69%
Internet Facility	232	71.38%
Housekeeping	249	76.62%
First Aid Facility	252	77.54%
Security Facility	242	74.46%
Total Feedback	3552	78.07%

### Survey Details - Detailed & Summary Graphs

<b>Survey:</b> 22-23 ODD III SSS TLP	<b>Survey Type:</b> Fresh Survey
<b>Survey For:</b> Facility Feedback	<b>Program:</b> B.Tech. Electrical Engineering in Electrical Engineering

#### Detailed Graph





## Summary Report

Number of people Responded / Total number of Responders is **61 / 72** People.

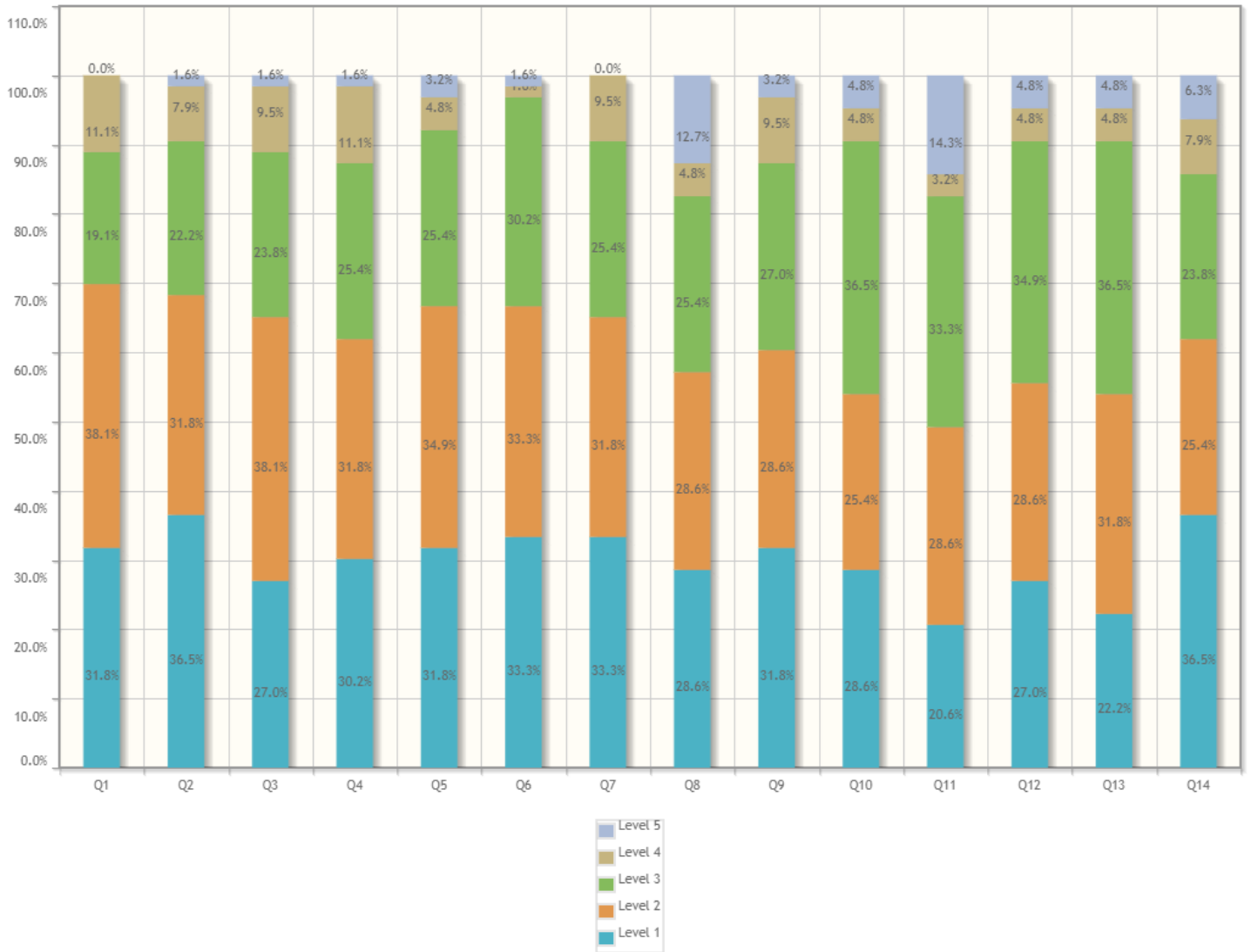
Questions	Total Response Count	Weighted Response Percent
How much of the syllabus was covered in the class?	258	84.59%
How well did the teachers prepare for the classes?	251	82.30%
How well were the teachers able to communicate?	251	82.30%
The teacher's approach to teaching can best be described as	252	82.62%
Fairness of the internal evaluation process by the teachers.	253	84.33%
Was your performance in assignments discussed with you?	256	83.93%
The institute takes active interest in promoting internship opportunities for students.	234	76.72%
The teaching and mentoring process in your institution facilitates you in cognitive, social and emotional growth.	249	81.64%
The institution provides multiple opportunities to learn and grow.	250	81.97%
Teachers inform you about your expected competencies, course outcomes and programme outcomes and review the course syllabus in the class.	254	83.28%
Your mentor does a necessary follow-up with an assigned task to you.	251	82.30%
The teachers illustrate the concepts through examples and applications.	256	83.93%
The teachers identify your strengths and encourage you with providing right level of challenges.	256	83.93%
Teachers are able to identify your weaknesses and help you to overcome them.	257	84.26%
The institution makes effort to engage students in the monitoring, review and continuous quality improvement of the teaching learning process.	253	82.95%
The institute/ teachers use student centric methods, such as experiential learning, participative learning and problem solving methodologies for enhancing learning experiences.	258	84.59%
Teachers encourage you to participate in extracurricular activities.	260	85.25%
Efforts are made by the institute/ teachers to inculcate soft skills, life skills and employability skills to make you ready for the world of work.	253	84.33%



### Survey Details - Detailed & Summary Graphs

<b>Survey:</b> 22-23 ODD III SSS IFS	<b>Survey Type:</b> Fresh Survey
<b>Survey For:</b> Facility Feedback	<b>Program:</b> B.Tech. Electrical Engineering in Electrical Engineering

#### Detailed Graph



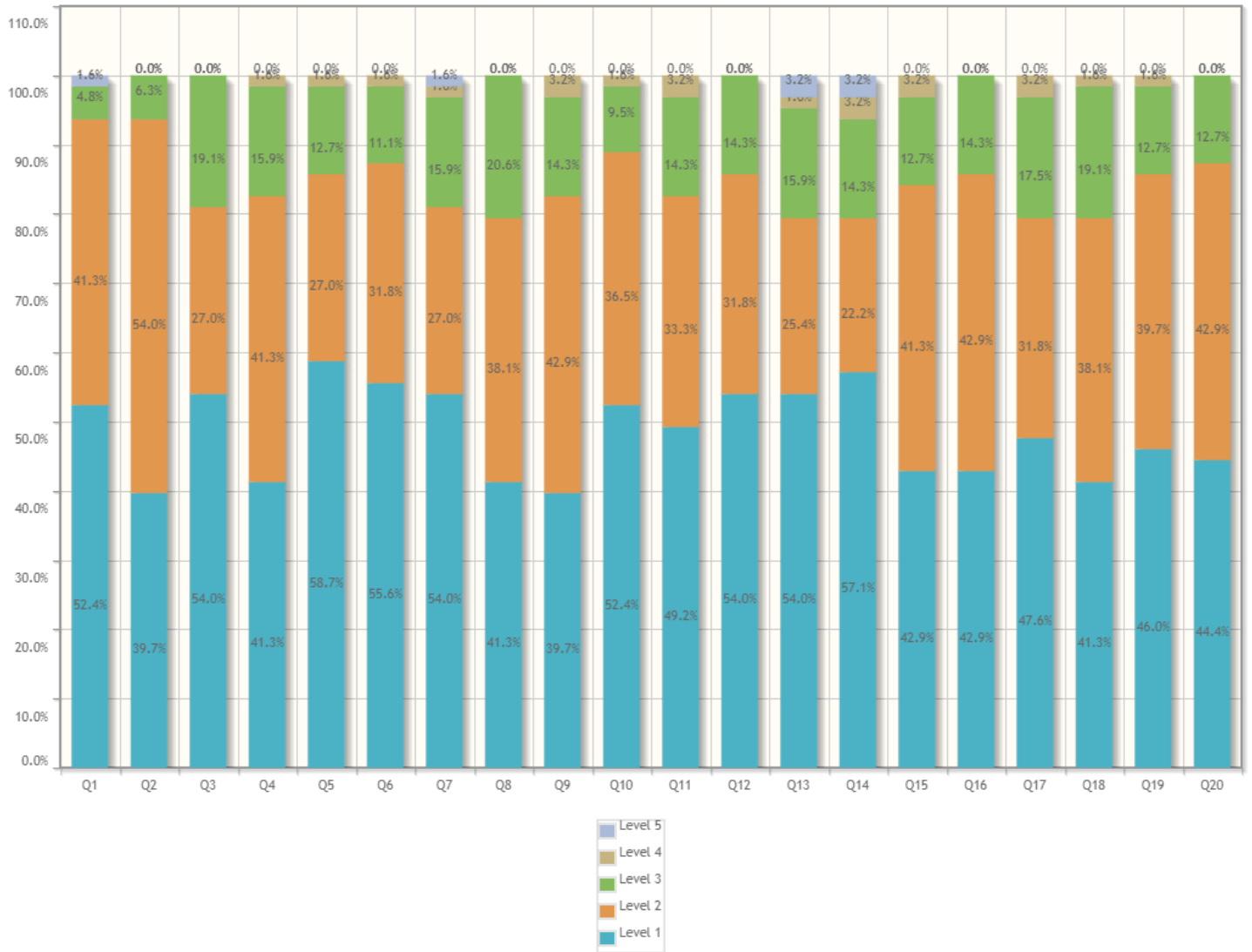




## Survey Details - Detailed & Summary Graphs

<b>Survey:</b> 22-23 ODD V SSS TLP	<b>Survey Type:</b> Fresh Survey
<b>Survey For:</b> Facility Feedback	<b>Program:</b> B.Tech. Electrical Engineering in Electrical Engineering

### Detailed Graph







## Summary Report

Number of people Responded / Total number of Responders is **63 / 68** People.

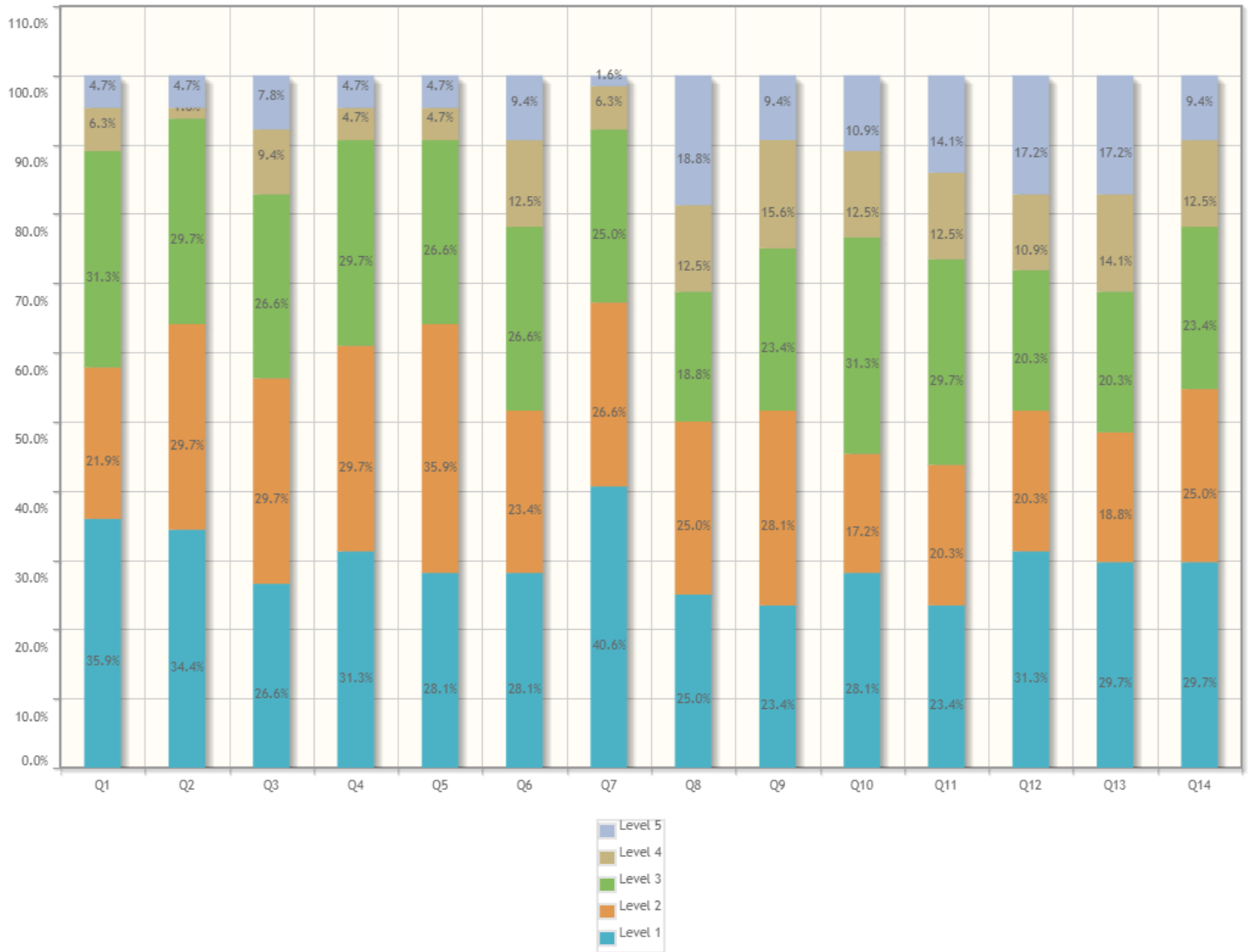
Questions	Total Response Count	Weighted Response Percent
How much of the syllabus was covered in the class?	279	88.57%
How well did the teachers prepare for the classes?	273	86.67%
How well were the teachers able to communicate?	274	86.98%
The teacher's approach to teaching can best be described as	266	84.44%
Fairness of the internal evaluation process by the teachers.	279	88.57%
Was your performance in assignments discussed with you?	278	88.25%
The institute takes active interest in promoting internship opportunities for students.	271	86.03%
The teaching and mentoring process in your institution facilitates you in cognitive, social and emotional growth.	265	84.13%
The institution provides multiple opportunities to learn and grow.	264	83.81%
Teachers inform you about your expected competencies, course outcomes and programme outcomes and review the course syllabus in the class.	277	87.94%
Your mentor does a necessary follow-up with an assigned task to you.	270	85.71%
The teachers illustrate the concepts through examples and applications.	277	87.94%
The teachers identify your strengths and encourage you with providing right level of challenges.	268	85.08%
Teachers are able to identify your weaknesses and help you to overcome them.	269	85.40%
The institution makes effort to engage students in the monitoring, review and continuous quality improvement of the teaching learning process.	267	84.76%
The institute/ teachers use student centric methods, such as experiential learning, participative learning and problem solving methodologies for enhancing learning experiences.	270	85.71%
Teachers encourage you to participate in extracurricular activities.	267	84.76%
Efforts are made by the institute/ teachers to inculcate soft skills, life skills and employability skills to make you ready for the world of work.	264	83.81%



### Survey Details - Detailed & Summary Graphs

<b>Survey:</b> 22-23 ODD V SSS IFS	<b>Survey Type:</b> Fresh Survey
<b>Survey For:</b> Facility Feedback	<b>Program:</b> B.Tech. Electrical Engineering in Electrical Engineering

#### Detailed Graph





## Summary Report

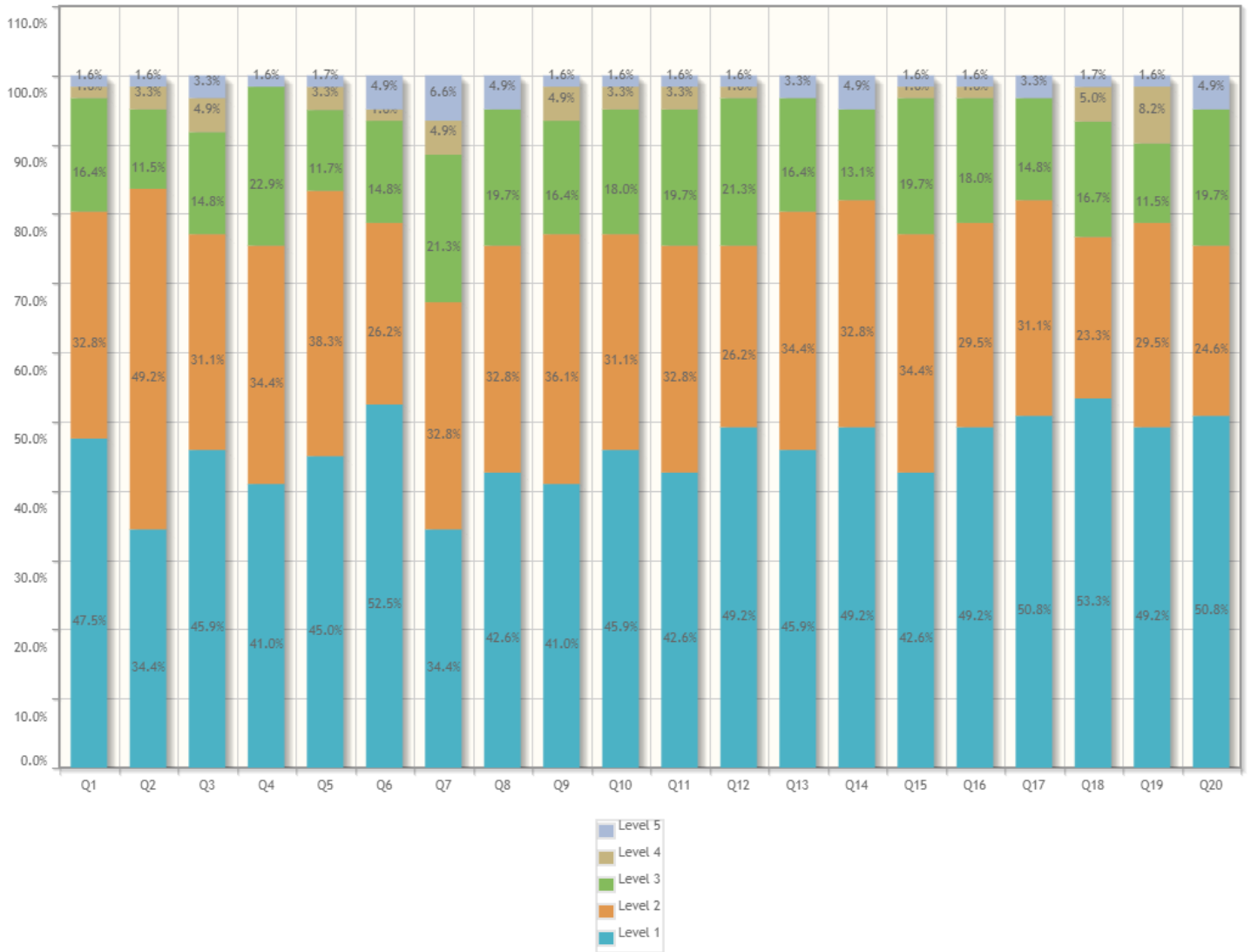
Number of people Responded / Total number of Responders is **64 / 68** People.

Questions	Total Response Count	Weighted Response Percent
Adequacy of Laboratory facilities (Number of set-ups/ equipments /tools etc.)	242	75.63%
Mechanism and approach to provide exposure to external world through Internships, Field Visits, Guest Lectures, Expert Talks etc.	248	77.50%
Infrastructure (Furniture/Black Board / Illumination/Ventilation etc.)	229	71.56%
Mechanism and approach to deal with students/parents grievances	242	75.63%
Students guidance and mentoring facilities	242	75.63%
Support for co-curricular and extra-curricular activities	223	69.69%
Library Facility	255	79.69%
Sports Facility	208	65.00%
Canteen Facility	218	68.13%
Transport Facility	217	67.81%
Internet Facility	209	65.31%
Housekeeping	216	67.50%
First Aid Facility	211	65.94%
Security Facility	226	70.63%
Total Feedback	3186	71.12%

### Survey Details - Detailed & Summary Graphs

<b>Survey:</b> 22-23 ODD III SSS TLP	<b>Survey Type:</b> Fresh Survey
<b>Survey For:</b> Facility Feedback	<b>Program:</b> B.Tech. Electrical Engineering in Electrical Engineering

#### Detailed Graph





## Summary Report

Number of people Responded / Total number of Responders is **61 / 72** People.

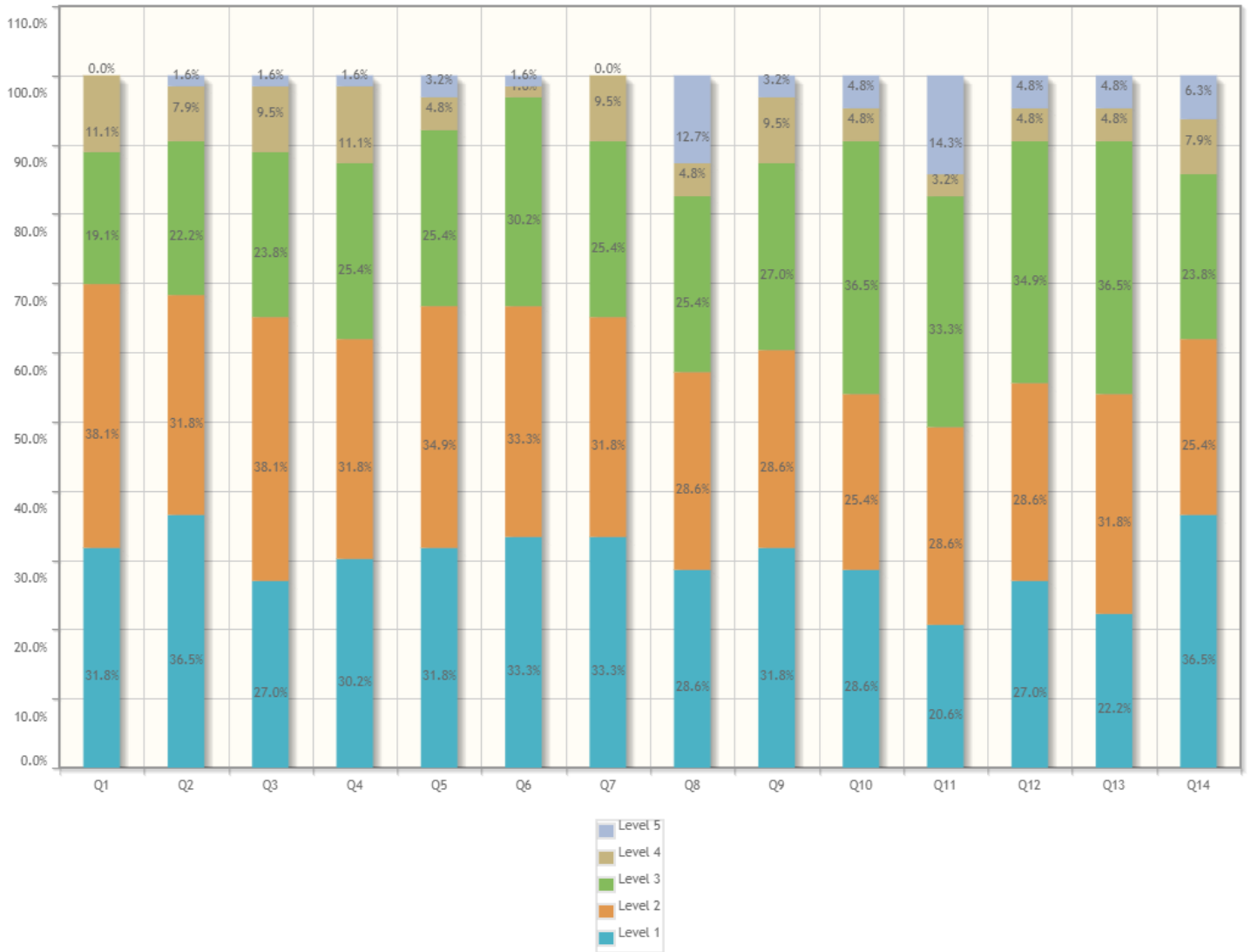
Questions	Total Response Count	Weighted Response Percent
How much of the syllabus was covered in the class?	258	84.59%
How well did the teachers prepare for the classes?	251	82.30%
How well were the teachers able to communicate?	251	82.30%
The teacher's approach to teaching can best be described as	252	82.62%
Fairness of the internal evaluation process by the teachers.	253	84.33%
Was your performance in assignments discussed with you?	256	83.93%
The institute takes active interest in promoting internship opportunities for students.	234	76.72%
The teaching and mentoring process in your institution facilitates you in cognitive, social and emotional growth.	249	81.64%
The institution provides multiple opportunities to learn and grow.	250	81.97%
Teachers inform you about your expected competencies, course outcomes and programme outcomes and review the course syllabus in the class.	254	83.28%
Your mentor does a necessary follow-up with an assigned task to you.	251	82.30%
The teachers illustrate the concepts through examples and applications.	256	83.93%
The teachers identify your strengths and encourage you with providing right level of challenges.	256	83.93%
Teachers are able to identify your weaknesses and help you to overcome them.	257	84.26%
The institution makes effort to engage students in the monitoring, review and continuous quality improvement of the teaching learning process.	253	82.95%
The institute/ teachers use student centric methods, such as experiential learning, participative learning and problem solving methodologies for enhancing learning experiences.	258	84.59%
Teachers encourage you to participate in extracurricular activities.	260	85.25%
Efforts are made by the institute/ teachers to inculcate soft skills, life skills and employability skills to make you ready for the world of work.	253	84.33%



### Survey Details - Detailed & Summary Graphs

<b>Survey:</b> 22-23 ODD III SSS IFS	<b>Survey Type:</b> Fresh Survey
<b>Survey For:</b> Facility Feedback	<b>Program:</b> B.Tech. Electrical Engineering in Electrical Engineering

#### Detailed Graph







## Summary Report

Number of people Responded / Total number of Responders is **63 / 72** People.

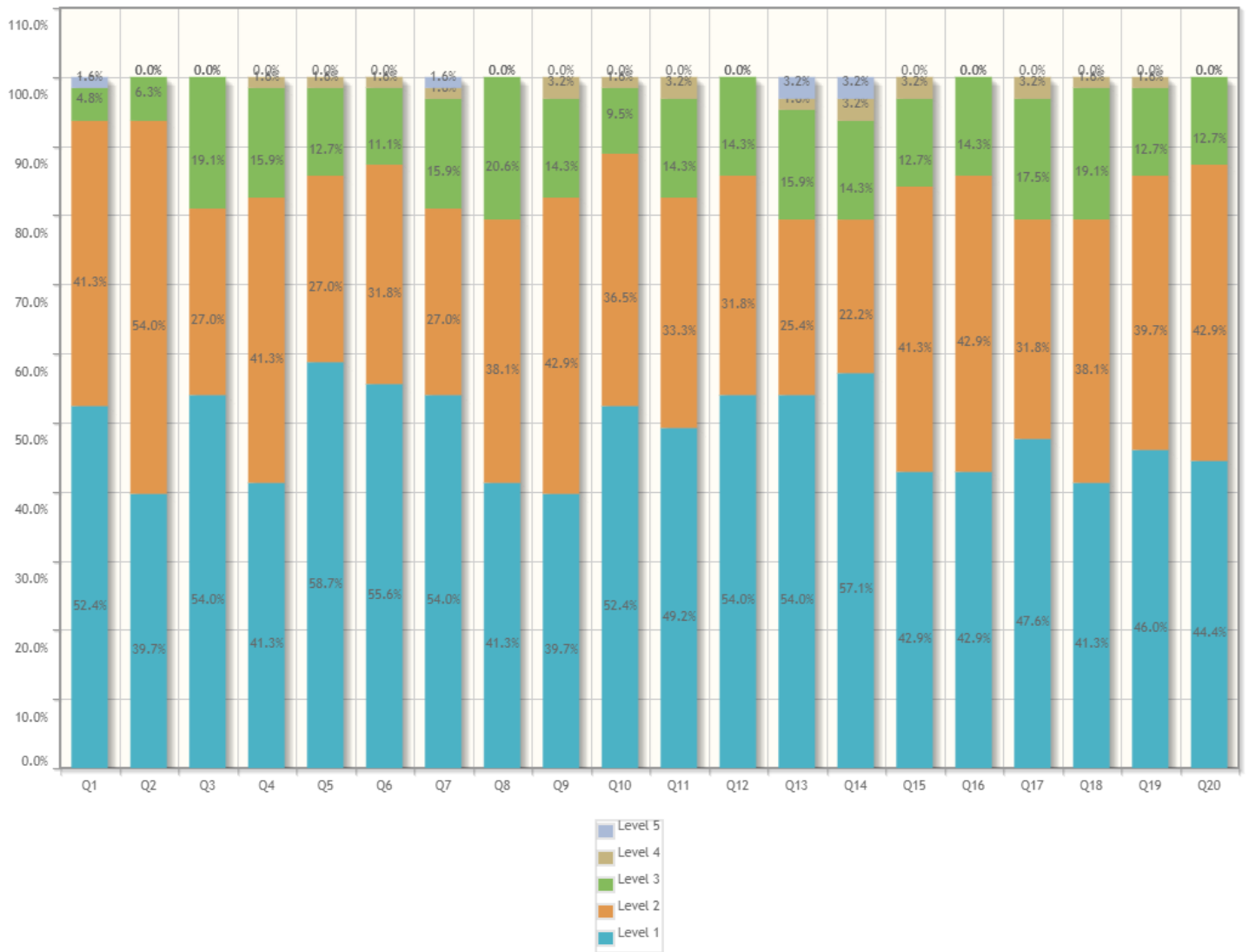
Questions	Total Response Count	Weighted Response Percent
Adequacy of Laboratory facilities (Number of set-ups/ equipments /tools etc.)	246	78.10%
Mechanism and approach to provide exposure to external world through Internships, Field Visits, Guest Lectures, Expert Talks etc.	248	78.73%
Infrastructure (Furniture/Black Board / Illumination/Ventilation etc.)	239	75.87%
Mechanism and approach to deal with students/parents grievances	238	75.56%
Students guidance and mentoring facilities	244	77.46%
Support for co-curricular and extra-curricular activities	249	79.05%
Library Facility	245	77.78%
Sports Facility	224	71.11%
Canteen Facility	237	75.24%
Transport Facility	232	73.65%
Internet Facility	213	67.62%
Housekeeping	232	73.65%
First Aid Facility	228	72.38%
Security Facility	238	75.56%
Total Feedback	3313	75.12%



### Survey Details - Detailed & Summary Graphs

<b>Survey:</b> 22-23 ODD V SSS TLP	<b>Survey Type:</b> Fresh Survey
<b>Survey For:</b> Facility Feedback	<b>Program:</b> B.Tech. Electrical Engineering in Electrical Engineering

#### Detailed Graph





## Summary Report

Number of people Responded / Total number of Responders is **63 / 68** People.

Questions	Total Response Count	Weighted Response Percent
How much of the syllabus was covered in the class?	279	88.57%
How well did the teachers prepare for the classes?	273	86.67%
How well were the teachers able to communicate?	274	86.98%
The teacher's approach to teaching can best be described as	266	84.44%
Fairness of the internal evaluation process by the teachers.	279	88.57%
Was your performance in assignments discussed with you?	278	88.25%
The institute takes active interest in promoting internship opportunities for students.	271	86.03%
The teaching and mentoring process in your institution facilitates you in cognitive, social and emotional growth.	265	84.13%
The institution provides multiple opportunities to learn and grow.	264	83.81%
Teachers inform you about your expected competencies, course outcomes and programme outcomes and review the course syllabus in the class.	277	87.94%
Your mentor does a necessary follow-up with an assigned task to you.	270	85.71%
The teachers illustrate the concepts through examples and applications.	277	87.94%
The teachers identify your strengths and encourage you with providing right level of challenges.	268	85.08%
Teachers are able to identify your weaknesses and help you to overcome them.	269	85.40%
The institution makes effort to engage students in the monitoring, review and continuous quality improvement of the teaching learning process.	267	84.76%
The institute/ teachers use student centric methods, such as experiential learning, participative learning and problem solving methodologies for enhancing learning experiences.	270	85.71%
Teachers encourage you to participate in extracurricular activities.	267	84.76%
Efforts are made by the institute/ teachers to inculcate soft skills, life skills and employability skills to make you ready for the world of work.	264	83.81%



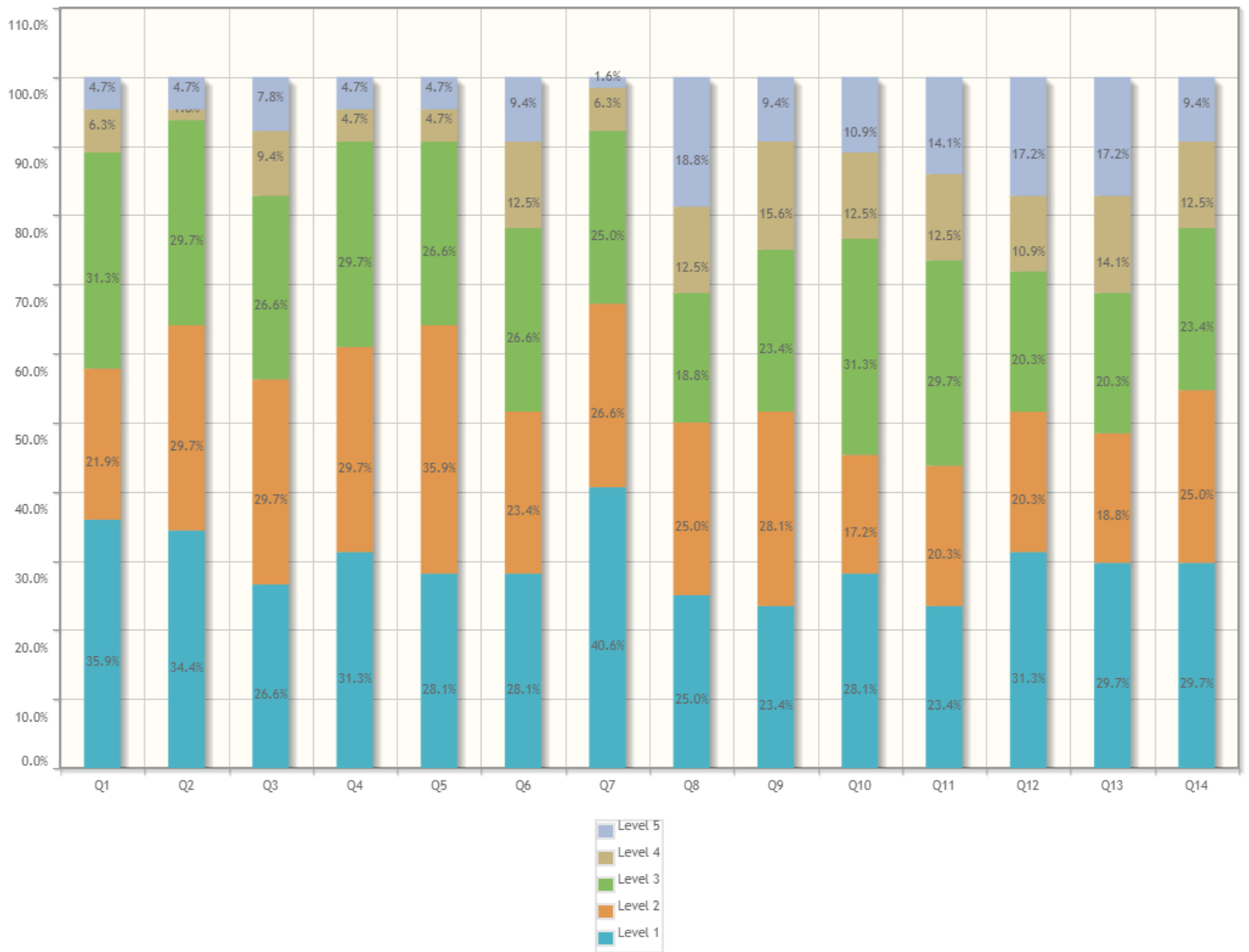
Sir Shantilal Badjate Charitable Trust, Nagpur  
S. B. Jain Institute of Technology, Management & Research, Nagpur  
(Approved by AICTE, An Autonomous Institute) Affiliated to R. T. M. Nagpur University  
Department of Electrical Engineering

<b>Questions</b>	<b>Total Response Count</b>	<b>Weighted Response Percent</b>
What percentage of teachers uses ICT tools such as PPTs, Multimedia, animations, etc. while teaching.	271	86.03%
The overall quality of teaching-learning process in your institute is very good.	272	86.35%
Total Feedback	5421	86.05%

### Survey Details - Detailed & Summary Graphs

<b>Survey:</b> 22-23 ODD V SSS IFS	<b>Survey Type:</b> Fresh Survey
<b>Survey For:</b> Facility Feedback	<b>Program:</b> B.Tech. Electrical Engineering in Electrical Engineering

#### Detailed Graph







# S. B. JAIN INSTITUTE OF TECHNOLOGY, MANAGEMENT & RESEARCH, NAGPUR.

(An Autonomous Institute, Affiliated to RTMNU, Nagpur)

**DEPARTMENT OF ELECTRICAL ENGINEERING**

*Vision: Transform knowledge seekers to globally competent professionals in Electrical Engineering*



**Session: 2022-23 (Even Semester)**

**Semester: IV & VI**

## **Suggestions received from Student Satisfaction Survey**

1. More real-life examples should be taken during course delivery.
2. More industrial visit should be conducted.

A handwritten signature in black ink, appearing to read 'Abhishek Junghare'.

Mr. Abhishek Junghare  
Feedback Incharge

# S. B. JAIN INSTITUTE OF TECHNOLOGY, MANAGEMENT & RESEARCH, NAGPUR.

(An Autonomous Institute, Affiliated to RTMNU, Nagpur)



## DEPARTMENT OF ELECTRICAL ENGINEERING

Vision: Transform knowledge seekers to globally competent professionals in Electrical Engineering



### Minutes of Meeting

<b>Agenda: -</b>	Student Suggestions from Student Satisfaction Survey.
<b>Date &amp; Time :-</b>	08/02/2023 02.00 PM to 2.30 PM
<b>Location:-</b>	HoD EE office
<b>Attendees:-</b>	<ol style="list-style-type: none"><li>1. Dr. Pankaj B. Thote, HoD(EE)</li><li>2. Dr. Chandrakant Rathore</li><li>3. Mr. Md Ashar</li><li>4. Mr. Saurabh Singh</li><li>5. Mr. Vishant Naik</li><li>6. Mr. Afsar Khan</li><li>7. Mr. Abhishek Junghare</li><li>8. Mr. Akshay Deshmukh</li><li>9. Ms. Nighar Sheikh</li><li>10. Ms. Priya Keshkar</li><li>11. Ms. Arpita Fusey</li></ol>
<b>Points Discussed</b>	<p>Student has suggested the following points for improvement through Student satisfaction survey.</p> <ol style="list-style-type: none"><li>1) Classroom Projector and CPU are not working properly.</li><li>2) Basic medicine should be present for emergency.</li><li>3) Industrial training should be organized.</li><li>4) College bus should be provided for Industrial visit.</li><li>5) Sufficient sports kits shall be made available.</li><li>6) White board should be installed in the classroom.</li><li>7) Maintenance &amp; cleaning of washroom should be done on regular basis.</li><li>8) College cultural events / techno festival should be organized.</li></ol>
<b>Key Decision Made /Action Taken</b>	<p><b>Following actions taken for improvement :</b></p> <ul style="list-style-type: none"><li>• Point no. 1 will be forwarded to IT infra for maintenance.</li><li>• Medical emergency kit is already present in the department at HoD office. Necessary procurement will be done on emergency basis.</li><li>• Industrial training will be organized in the upcoming semesters.</li><li>• Point no. 4, 5, 6, 7 &amp; 8 shall be forwarded to the Principal office for action at Institute level.</li></ul>

Name of Attendees

Signature

1. Dr. Pankaj Thote, HoD(EE)

2. Dr. Chandrakant Rathore

3. Mr. Md Ashar

4. Mr. Saurabh Singh

5. Mr. Vishant Naik

Name of Attendees

Signature

6. Mr. Afsar Khan

7. Mr. Abhishek Junghare

8. Mr. Akshay Deshmukh

9. Ms. Nighar Sheikh

10. Ms. Priya Keshkar

11. Ms. Arpita Fusey





# S. B. JAIN INSTITUTE OF TECHNOLOGY, MANAGEMENT & RESEARCH, NAGPUR.

(An Autonomous Institute, Affiliated to RTMNU, Nagpur)

**DEPARTMENT OF ELECTRICAL ENGINEERING**

*Vision: Transform knowledge seekers to globally competent professionals in Electrical Engineering*



**Session: 2022-23 (Odd Semester)**

## **Suggestions received from Student Satisfaction Survey**

- Classroom Projector and CPU are not working properly.
- Basic medicine should be present for emergency.
- Industrial training should be organized.
- College bus should be provided for Industrial visit.
- Sufficient sports kits shall be made available.
- White board should be installed in the classroom.
- Maintenance & cleaning of washroom should be done on regular basis.
- College cultural events / techno festival should be organized.

Mr. Abhishek Junghare  
Feedback In-charge

# S. B. JAIN INSTITUTE OF TECHNOLOGY, MANAGEMENT & RESEARCH, NAGPUR.

(An Autonomous Institute, Affiliated to RTMNU, Nagpur)



## DEPARTMENT OF ELECTRICAL ENGINEERING

Vision: Transform knowledge seekers to globally competent professionals in Electrical Engineering



### Minutes of Meeting

<b>Agenda: -</b>	Student suggestions from Student satisfaction Survey.
<b>Date &amp; Time :-</b>	Dt.: 09/06/23 Time: 1.30 PM to 2.00 PM
<b>Location:-</b>	HoD (EE) office
<b>Attendees:-</b>	<ol style="list-style-type: none"><li>1. Dr. Pankaj B. Thote, HoD(EE)</li><li>2. Dr. Chandrakant Rathore</li><li>3. Mr. Md Ashar</li><li>4. Mr. Saurabh Singh</li><li>5. Mr. Vishant Naik</li><li>6. Mr. Afsar Khan</li><li>7. Mr. Abhishek Junghare</li><li>8. Mr. Akshay Deshmukh</li><li>9. Ms. Nighar Sheikh</li><li>10. Ms. Priya Keshkar</li><li>11. Ms. Arpita Fusey</li></ol>
<b>Points Discussed</b>	<p>Student has suggested the following points for improvement through Student satisfaction survey.</p> <ol style="list-style-type: none"><li>1. More real-life examples should be taken during course delivery.</li><li>2. More industrial visit should be conducted.</li></ol>
<b>Key Decision Made /Action Taken</b>	<p><b>Following actions taken for improvement :</b></p> <ul style="list-style-type: none"><li>• Points 1 and 2 will be implemented at the departmental level in the upcoming semester</li></ul>

Name of Attendees

Signature

Name of Attendees

Signature

1. Dr. Pankaj Thote, HoD(EE)

2. Dr. Chandrakant Rathore

3. Mr. Md Ashar

4. Mr. Saurabh Singh

5. Mr. Vishant Naik

6. Mr. Afsar Khan

7. Mr. Abhishek Junghare

8. Mr. Akshay Deshmukh

9. Ms. Nighar Sheikh

10. Ms. Priya Keshkar

11. Ms. Arpita Fusey