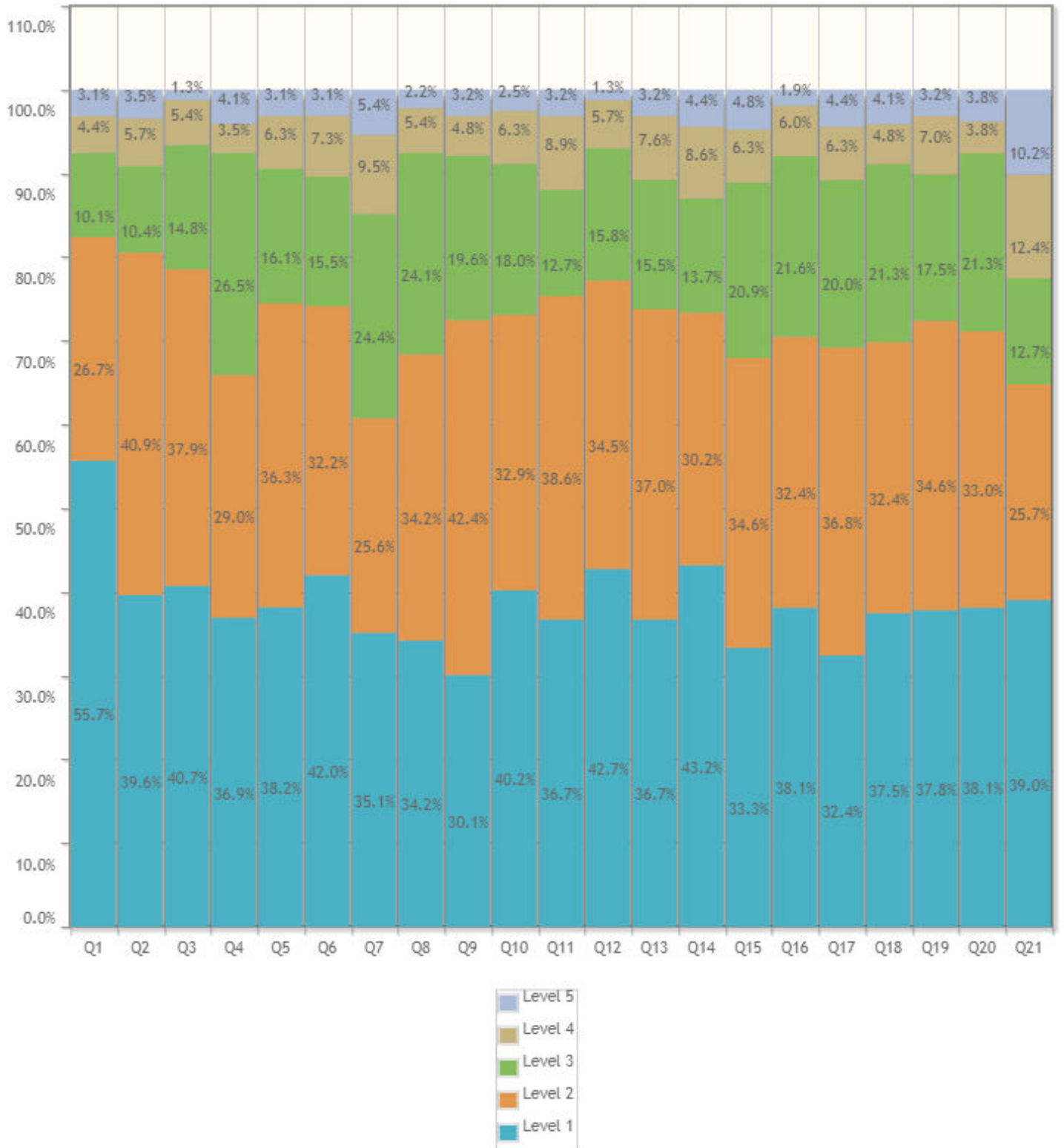


Survey Details - Detailed & Summary Report

Survey: 2023 -24 1ST SEMESTER STUDENT SATISFACTION SURVEY (PART A)	Survey Type: Fresh Survey
Survey For: Faculty Feedback	Program: First Year Engineering in First Year

Detailed Report



1. How much of the syllabus was covered in the class?	Responses	Weighted Responses	Percent
1. 4 - 85 to 100%	177	885	55.66%
2. 3 - 70 to 84%	85	340	26.73%
3. 2 - 55 to 69%	32	96	10.06%
4. 1- 30 to 54%	14	28	4.40%
5. 0 -Below 30%	10	10	3.14%

1. How much of the syllabus was covered in the class?	Responses	Weighted Responses	Percent
Total	318	1359	85.47%

2. How well did the teachers prepare for the classes?	Responses	Weighted Responses	Percent
1. 4 -Thoroughly	126	630	39.62%
2. 3 - Satisfactorily	130	520	40.88%
3. 2 - Poorly	33	99	10.38%
4. 1 - Indifferently	18	36	5.66%
5. 0 - Won't teach at all	11	11	3.46%
Total	318	1296	81.51%

3. How well were the teachers able to communicate?	Responses	Weighted Responses	Percent
1. 4 - Always effective	129	645	40.69%
2. 3 - Sometimes effective	120	480	37.85%
3. 2 - Just satisfactorily	47	141	14.83%
4. 1- Generally ineffective	17	34	5.36%
5. 0- Very poor communication	4	4	1.26%
Total	317	1304	82.27%

4. The teacher's approach to teaching can best be described as	Responses	Weighted Responses	Percent
1. 4- Excellent	117	585	36.91%
2. 3 - Very good	92	368	29.02%
3. 2 - Good	84	252	26.50%
4. 1 - Fair	11	22	3.47%
5. 0- Poor	13	13	4.10%
Total	317	1240	78.23%

5. Fairness of the internal evaluation process by the teachers.	Responses	Weighted Responses	Percent
1. 4 - Always fair	121	605	38.17%
2. 3 - Usually fair	115	460	36.28%
3. 2 - Sometimes unfair	51	153	16.09%
4. 1 - Usually unfair	20	40	6.31%
5. 0- Unfair	10	10	3.15%
Total	317	1268	80.00%

6. Was your performance in assignments discussed with you?	Responses	Weighted Responses	Percent
1. 4 - Every time	133	665	41.96%
2. 3 - Usually	102	408	32.18%
3. 2 - Occasionally/Sometimes	49	147	15.46%
4. 1 - Rarely	23	46	7.26%
5. 0- Never	10	10	3.15%
Total	317	1276	80.50%

7. The institute takes active interest in promoting internship opportunities for students.	Responses	Weighted Responses	Percent
1. 4 - Regularly	111	555	35.13%

7. The institute takes active interest in promoting internship opportunities for students.	Responses	Weighted Responses	Percent
2. 3 - Often	81	324	25.63%
3. 2 - Sometimes	77	231	24.37%
4. 1 - Rarely	30	60	9.49%
5. 0- Never	17	17	5.38%
Total	316	1187	75.13%

8. The teaching and mentoring process in your institution facilitates you in cognitive, social and emotional growth.	Responses	Weighted Responses	Percent
1. 4 - Significantly	108	540	34.18%
2. 3 - Very well	108	432	34.18%
3. 2 - Moderately	76	228	24.05%
4. 1 - Marginally	17	34	5.38%
5. 0- Not at all	7	7	2.22%
Total	316	1241	78.54%

9. The institution provides multiple opportunities to learn and grow	Responses	Weighted Responses	Percent
1. 4 - Strongly agree	95	475	30.06%
2. 3 - Agree	134	536	42.41%
3. 2 - Neutral	62	186	19.62%
4. 1 - Disagree	15	30	4.75%
5. 0- Strongly disagree	10	10	3.16%
Total	316	1237	78.29%

10. Teachers inform you about your expected competencies, course outcomes and programme outcomes and review the course syllabus in the class.	Responses	Weighted Responses	Percent
1. 4 - Every time	127	635	40.19%
2. 3 - Usually	104	416	32.91%
3. 2- Occasionally/Sometimes	57	171	18.04%
4. 1 - Rarely	20	40	6.33%
5. 0- Never	8	8	2.53%
Total	316	1270	80.38%

11. Your mentor does a necessary follow-up with an assigned task to you.	Responses	Weighted Responses	Percent
1. 4 - Every time	116	580	36.71%
2. 3 - Usually	122	488	38.61%
3. 2 - Occasionally/Sometimes	40	120	12.66%
4. 1 - Rarely	28	56	8.86%
5. 0 - I don't have a mentor	10	10	3.16%
Total	316	1254	79.37%

12. The teachers illustrate the concepts through examples and applications.	Responses	Weighted Responses	Percent
1. 4 - Every time	135	675	42.72%
2. 3 - Usually	109	436	34.49%

12. The teachers illustrate the concepts through examples and applications.	Responses	Weighted Responses	Percent
3. 2 - Occasionally/Sometimes	50	150	15.82%
4. 1- Rarely	18	36	5.70%
5. 0 - Never	4	4	1.27%
Total	316	1301	82.34%

13. The teachers identify your strengths and encourage you with providing right level of challenges.	Responses	Weighted Responses	Percent
1. 4 - Fully	116	580	36.71%
2. 3 - Reasonably	117	468	37.03%
3. 2 - Partially	49	147	15.51%
4. 1 - Slightly	24	48	7.59%
5. 0- Unable to	10	10	3.16%
Total	316	1253	79.30%

14. Teachers are able to identify your weaknesses and help you to overcome them.	Responses	Weighted Responses	Percent
1. 4 - Every time	136	680	43.17%
2. 3 - Usually	95	380	30.16%
3. 2 - Occasionally/Sometimes	43	129	13.65%
4. 1 - Rarely	27	54	8.57%
5. 0 - Never	14	14	4.44%
Total	315	1257	79.81%

15. The institution makes effort to engage students in the monitoring, review and continuous quality improvement of the teaching learning process.	Responses	Weighted Responses	Percent
1. 4 - Strongly agree	105	525	33.33%
2. 3 - Agree	109	436	34.60%
3. 2 - Neutral	66	198	20.95%
4. 1 - Disagree	20	40	6.35%
5. 0 - Strongly disagree	15	15	4.76%
Total	315	1214	77.08%

16. The institute/ teachers use student centric methods, such as experiential learning, participative learning and problem solving methodologies for enhancing learning experiences.	Responses	Weighted Responses	Percent
1. 4 - To a great extent	120	600	38.10%
2. 3 - Moderate	102	408	32.38%
3. 2 - Some what	68	204	21.59%
4. 1 - Very little	19	38	6.03%
5. 0 - Not at all	6	6	1.90%
Total	315	1256	79.75%

17. Teachers encourage you to participate in extracurricular activities	Responses	Weighted Responses	Percent
1. 4 - Strongly agree	102	510	32.38%
2. 3 - Agree	116	464	36.83%

17. Teachers encourage you to participate in extracurricular activities	Responses	Weighted Responses	Percent
3. 2 - Neutral	63	189	20.00%
4. 1 - Disagree	20	40	6.35%
5. 0 - Strongly disagree	14	14	4.44%
Total	315	1217	77.27%

18. Efforts are made by the institute/ teachers to inculcate soft skills, life skills and employability skills to make you ready for the world of work.	Responses	Weighted Responses	Percent
1. 4 - To a great extent	118	590	37.46%
2. 3 - Moderate	102	408	32.38%
3. 2 - Some what	67	201	21.27%
4. 1 - Very little	15	30	4.76%
5. 0 - Not at all	13	13	4.13%
Total	315	1242	78.86%

19. What percentage of teachers uses ICT tools such as PPTs, Multimedia, animations, etc. while teaching.	Responses	Weighted Responses	Percent
1. 4 - Above 90%	119	595	37.78%
2. 3 - 70 - 89%	109	436	34.60%
3. 2 - 50 - 69%	55	165	17.46%
4. 1 - 30 - 49%	22	44	6.98%
5. 0 - Below 29%	10	10	3.17%
Total	315	1250	79.37%

20. The overall quality of teaching-learning process in your institute is very good	Responses	Weighted Responses	Percent
1. 4 -Strongly agree	120	600	38.10%
2. 3 - Agree	104	416	33.02%
3. 2 - Neutral	67	201	21.27%
4. 1 - Disagree	12	24	3.81%
5. 0 - Strongly disagree	12	12	3.81%
Total	315	1253	79.56%

21. Give three observation / suggestions to improve the overall teaching - learning experience in your institution. (Observation/Suggestion may also be a review of any course content of the syllabus/ Content you would have wished to learn).	Responses	Weighted Responses	Percent
1. 4- PLEASE WRITE IF ANY COMMENT	123	615	39.05%
2. 3- PLEASE WRITE IF ANY COMMENT	81	324	25.71%
3. 2- PLEASE WRITE IF ANY COMMENT	40	120	12.70%
4. 1- PLEASE WRITE IF ANY COMMENT	39	78	12.38%
5. 0- PLEASE WRITE IF ANY COMMENT	32	32	10.16%
Total	315	1169	74.22%

Summary Report

Number of people Responded / Total number of Responders is **314 / 441** People.

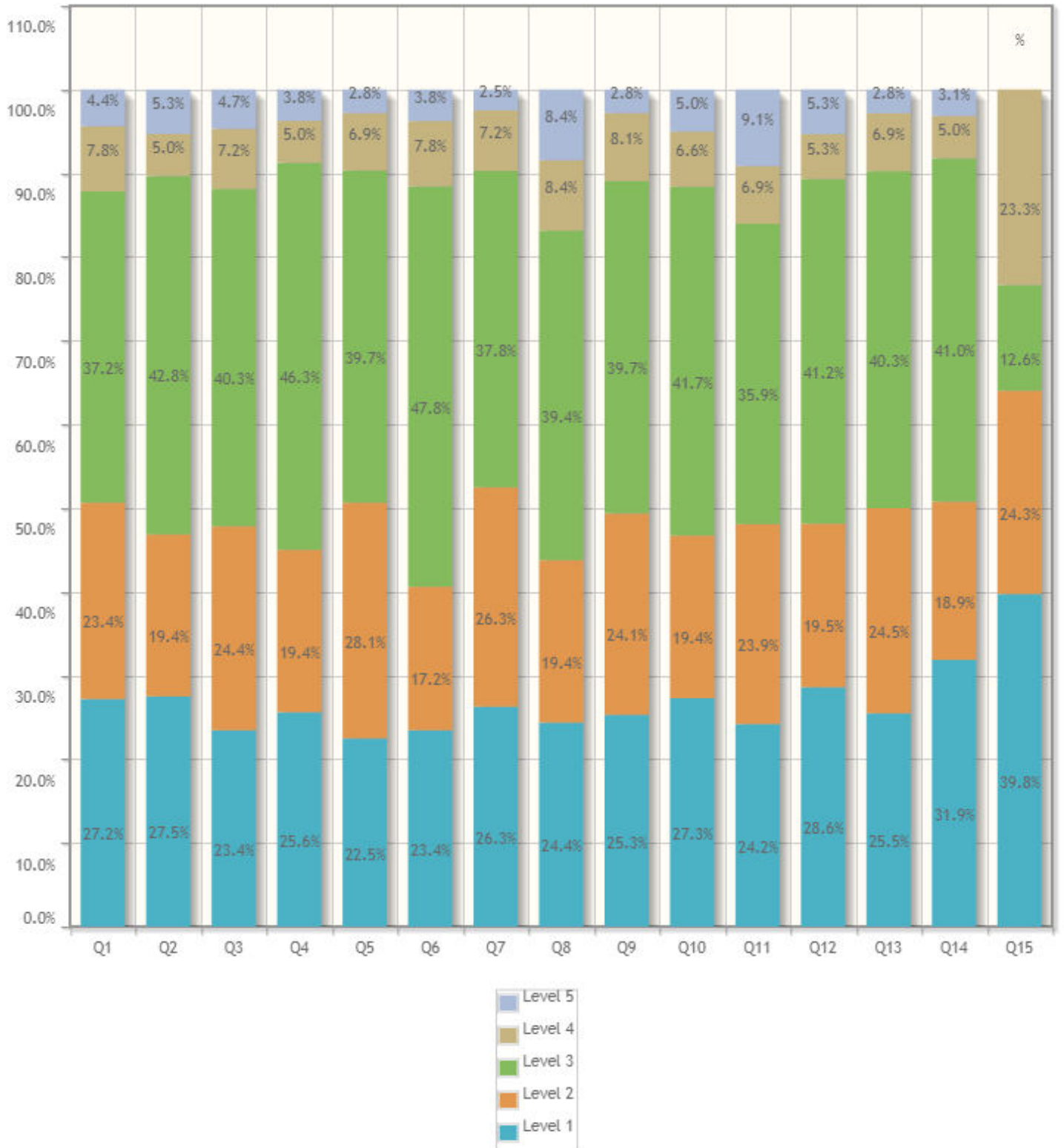
Questions	Total Response Count	Weighted Response Percent
How much of the syllabus was covered in the class?	1359	85.47%
How well did the teachers prepare for the classes?	1296	81.51%
How well were the teachers able to communicate?	1304	82.27%
The teacher's approach to teaching can best be described as	1240	78.23%
Fairness of the internal evaluation process by the teachers.	1268	80.00%
Was your performance in assignments discussed with you?	1276	80.50%
The institute takes active interest in promoting internship opportunities for students.	1187	75.13%
The teaching and mentoring process in your institution facilitates you in cognitive, social and emotional growth.	1241	78.54%
The institution provides multiple opportunities to learn and grow	1237	78.29%
Teachers inform you about your expected competencies, course outcomes and programme outcomes and review the course syllabus in the class.	1270	80.38%
Your mentor does a necessary follow-up with an assigned task to you.	1254	79.37%
The teachers illustrate the concepts through examples and applications.	1301	82.34%
The teachers identify your strengths and encourage you with providing right level of challenges.	1253	79.30%
Teachers are able to identify your weaknesses and help you to overcome them.	1257	79.81%
The institution makes effort to engage students in the monitoring, review and continuous quality improvement of the teaching learning process.	1214	77.08%
The institute/ teachers use student centric methods, such as experiential learning, participative learning and problem solving methodologies for enhancing learning experiences.	1256	79.75%
Teachers encourage you to participate in extracurricular activities	1217	77.27%
Efforts are made by the institute/ teachers to inculcate soft skills, life skills and employability skills to make you ready for the world of work.	1242	78.86%

Questions	Total Response Count	Weighted Response Percent
What percentage of teachers uses ICT tools such as PPTs, Multimedia, animations, etc. while teaching.	1250	79.37%
The overall quality of teaching-learning process in your institute is very good	1253	79.56%
Give three observation / suggestions to improve the overall teaching - learning experience in your institution. (Observation/Suggestion may also be a review of any course content of the syllabus/ Content you would have wished to learn).	1169	74.22%
Total Feedback	26344	79.40%

Survey Details - Detailed & Summary Report

Survey: 2023 -24 1ST SEMESTER STUDENT SATISFACTION SURVEY (PART B)	Survey Type: Fresh Survey
Survey For: Faculty Feedback	Program: First Year Engineering in First Year

Detailed Report



1. Adequacy of Laboratory facilities\n(Number of set-ups/ equipment /tools etc.)	Responses	Weighted Responses	Percent
1. 5. Excellent	87	435	27.19%
2. 4. Very Good	75	300	23.44%
3. 3. Good	119	357	37.19%
4. 2. Fair	25	50	7.81%
5. 1. Poor	14	14	4.38%

1. Adequacy of Laboratory facilities\n(Number of set-ups/ equipment /tools etc.)	Responses	Weighted Responses	Percent
Total	320	1156	72.25%

2. Mechanism and approach to provide exposure to external world through Internships, Field Visits, Guest Lectures, Expert Talks etc.	Responses	Weighted Responses	Percent
1. 5. Excellent	88	440	27.50%
2. 4. Very Good	62	248	19.38%
3. 3. Good	137	411	42.81%
4. 2. Fair	16	32	5.00%
5. 1. Poor	17	17	5.31%
Total	320	1148	71.75%

3. Infrastructure (Furniture/Black Board / Illumination/Ventilation etc.)	Responses	Weighted Responses	Percent
1. 5. Excellent	75	375	23.44%
2. 4. Very Good	78	312	24.38%
3. 3. Good	129	387	40.31%
4. 2. Fair	23	46	7.19%
5. 1. Poor	15	15	4.69%
Total	320	1135	70.94%

4. Mechanism and approach to deal with students/parents grievances	Responses	Weighted Responses	Percent
1. 5. Excellent	82	410	25.63%
2. 4. Very Good	62	248	19.38%
3. 3. Good	148	444	46.25%
4. 2. Fair	16	32	5.00%
5. 1. Poor	12	12	3.75%
Total	320	1146	71.63%

5. Students guidance and mentoring facilities	Responses	Weighted Responses	Percent
1. 5. Excellent	72	360	22.50%
2. 4. Very Good	90	360	28.13%
3. 3. Good	127	381	39.69%
4. 2. Fair	22	44	6.88%
5. 1. Poor	9	9	2.81%
Total	320	1154	72.13%

6. Support for co-curricular and extra-curricular activities	Responses	Weighted Responses	Percent
1. 5. Excellent	75	375	23.44%
2. 4. Very Good	55	220	17.19%
3. 3. Good	153	459	47.81%
4. 2. Fair	25	50	7.81%
5. 1. Poor	12	12	3.75%
Total	320	1116	69.75%

7. Library Facility	Responses	Weighted Responses	Percent
1. 5. Excellent	84	420	26.25%
2. 4. Very Good	84	336	26.25%
3. 3. Good	121	363	37.81%
4. 2. Fair	23	46	7.19%
5. 1. Poor	8	8	2.50%
Total	320	1173	73.31%

8. Sports Facility	Responses	Weighted Responses	Percent
1. 5. Excellent	78	390	24.38%
2. 4. Very Good	62	248	19.38%
3. 3. Good	126	378	39.38%
4. 2. Fair	27	54	8.44%
5. 1. Poor	27	27	8.44%
Total	320	1097	68.56%

9. Canteen Facility	Responses	Weighted Responses	Percent
1. 5. Excellent	81	405	25.31%
2. 4. Very Good	77	308	24.06%
3. 3. Good	127	381	39.69%
4. 2. Fair	26	52	8.13%
5. 1. Poor	9	9	2.81%
Total	320	1155	72.19%

10. Transport Facility	Responses	Weighted Responses	Percent
1. 5. Excellent	87	435	27.27%
2. 4. Very Good	62	248	19.44%
3. 3. Good	133	399	41.69%
4. 2. Fair	21	42	6.58%
5. 1. Poor	16	16	5.02%
Total	319	1140	71.47%

11. Internet Facility	Responses	Weighted Responses	Percent
1. 5. Excellent	77	385	24.21%
2. 4. Very Good	76	304	23.90%
3. 3. Good	114	342	35.85%
4. 2. Fair	22	44	6.92%
5. 1. Poor	29	29	9.12%
Total	318	1104	69.43%

12. Housekeeping	Responses	Weighted Responses	Percent
1. 5. Excellent	91	455	28.62%
2. 4. Very Good	62	248	19.50%
3. 3. Good	131	393	41.20%
4. 2. Fair	17	34	5.35%

12. Housekeeping	Responses	Weighted Responses	Percent
5. 1. Poor	17	17	5.35%
Total	318	1147	72.14%

13. First Aid Facility	Responses	Weighted Responses	Percent
1. 5. Excellent	81	405	25.47%
2. 4. Very Good	78	312	24.53%
3. 3. Good	128	384	40.25%
4. 2. Fair	22	44	6.92%
5. 1. Poor	9	9	2.83%
Total	318	1154	72.58%

14. Security Facility	Responses	Weighted Responses	Percent
1. 5. Excellent	101	505	31.86%
2. 4. Very Good	60	240	18.93%
3. 3. Good	130	390	41.01%
4. 2. Fair	16	32	5.05%
5. 1. Poor	10	10	3.15%
Total	317	1177	74.26%

15. Suggestions, if any:	Responses	Weighted Responses	Percent
1. 4- PLEASE WRITE IF ANY COMMENT	126	504	39.75%
2. 3- PLEASE WRITE IF ANY COMMENT	77	231	24.29%
3. 2- PLEASE WRITE IF ANY COMMENT	40	80	12.62%
4. 1- PLEASE WRITE IF ANY COMMENT	74	74	23.34%
Total	317	889	70.11%

Summary Report

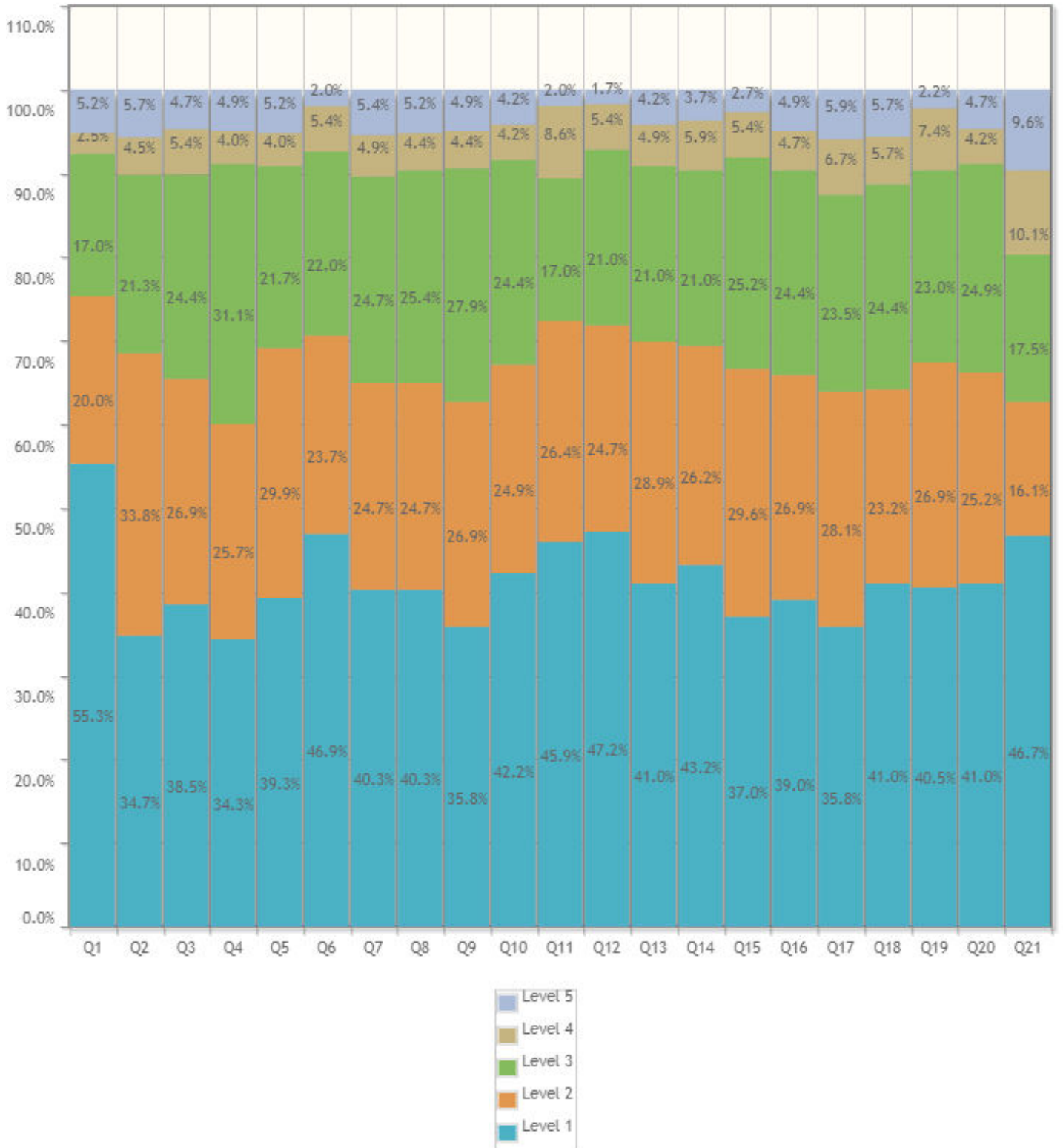
Number of people Responded / Total number of Responders is **317 / 441** People.

Questions	Total Response Count	Weighted Response Percent
Adequacy of Laboratory facilities\n(Number of set-ups/ equipment /tools etc.)	1156	72.25%
Mechanism and approach to provide exposure to external world through Internships, Field Visits, Guest Lectures, Expert Talks etc.	1148	71.75%
Infrastructure (Furniture/Black Board / Illumination/Ventilation etc.)	1135	70.94%
Mechanism and approach to deal with students/parents grievances	1146	71.63%
Students guidance and mentoring facilities	1154	72.13%
Support for co-curricular and extra-curricular activities	1116	69.75%
Library Facility	1173	73.31%
Sports Facility	1097	68.56%
Canteen Facility	1155	72.19%
Transport Facility	1140	71.47%
Internet Facility	1104	69.43%
Housekeeping	1147	72.14%
First Aid Facility	1154	72.58%
Security Facility	1177	74.26%
Suggestions, if any:	889	56.09%
Total Feedback	16891	70.57%

Survey Details - Detailed & Summary Report

Survey: 2023 -24 2nd SEMESTER STUDENT SATISFACTION SURVEY (PART A)	Survey Type: Fresh Survey
Survey For: Faculty Feedback	Program: First Year Engineering in First Year

Detailed Report



1. How much of the syllabus was covered in the class?	Responses	Weighted Responses	Percent
1. 4 - 85 to 100%	224	1120	55.31%
2. 3 - 70 to 84%	81	324	20.00%
3. 2 - 55 to 69%	69	207	17.04%
4. 1- 30 to 54%	10	20	2.47%
5. 0 -Below 30%	21	21	5.19%

1. How much of the syllabus was covered in the class?	Responses	Weighted Responses	Percent
Total	405	1692	83.56%

2. How well did the teachers prepare for the classes?	Responses	Weighted Responses	Percent
1. 4 -Thoroughly	140	700	34.74%
2. 3 - Satisfactorily	136	544	33.75%
3. 2 - Poorly	86	258	21.34%
4. 1 - Indifferently	18	36	4.47%
5. 0 - Won't teach at all	23	23	5.71%
Total	403	1561	77.47%

3. How well were the teachers able to communicate?	Responses	Weighted Responses	Percent
1. 4 - Always effective	156	780	38.52%
2. 3 - Sometimes effective	109	436	26.91%
3. 2 - Just satisfactorily	99	297	24.44%
4. 1- Generally ineffective	22	44	5.43%
5. 0- Very poor communication	19	19	4.69%
Total	405	1576	77.83%

4. The teacher's approach to teaching can best be described as	Responses	Weighted Responses	Percent
1. 4- Excellent	139	695	34.32%
2. 3 - Very good	104	416	25.68%
3. 2 - Good	126	378	31.11%
4. 1 - Fair	16	32	3.95%
5. 0- Poor	20	20	4.94%
Total	405	1541	76.10%

5. Fairness of the internal evaluation process by the teachers.	Responses	Weighted Responses	Percent
1. 4 - Always fair	159	795	39.26%
2. 3 - Usually fair	121	484	29.88%
3. 2 - Sometimes unfair	88	264	21.73%
4. 1 - Usually unfair	16	32	3.95%
5. 0- Unfair	21	21	5.19%
Total	405	1596	78.81%

6. Was your performance in assignments discussed with you?	Responses	Weighted Responses	Percent
1. 4 - Every time	190	950	46.91%
2. 3 - Usually	96	384	23.70%
3. 2 - Occasionally/Sometimes	89	267	21.98%
4. 1 - Rarely	22	44	5.43%
5. 0- Never	8	8	1.98%
Total	405	1653	81.63%

7. The institute takes active interest in promoting internship opportunities for students.	Responses	Weighted Responses	Percent
1. 4 - Regularly	163	815	40.25%

7. The institute takes active interest in promoting internship opportunities for students.	Responses	Weighted Responses	Percent
2. 3 - Often	100	400	24.69%
3. 2 - Sometimes	100	300	24.69%
4. 1 - Rarely	20	40	4.94%
5. 0- Never	22	22	5.43%
Total	405	1577	77.88%

8. The teaching and mentoring process in your institution facilitates you in cognitive, social and emotional growth.	Responses	Weighted Responses	Percent
1. 4 - Significantly	163	815	40.25%
2. 3 - Very well	100	400	24.69%
3. 2 - Moderately	103	309	25.43%
4. 1 - Marginally	18	36	4.44%
5. 0- Not at all	21	21	5.19%
Total	405	1581	78.07%

9. The institution provides multiple opportunities to learn and grow	Responses	Weighted Responses	Percent
1. 4 - Strongly agree	145	725	35.80%
2. 3 - Agree	109	436	26.91%
3. 2 - Neutral	113	339	27.90%
4. 1 - Disagree	18	36	4.44%
5. 0- Strongly disagree	20	20	4.94%
Total	405	1556	76.84%

10. Teachers inform you about your expected competencies, course outcomes and programme outcomes and review the course syllabus in the class.	Responses	Weighted Responses	Percent
1. 4 - Every time	171	855	42.22%
2. 3 - Usually	101	404	24.94%
3. 2- Occasionally/Sometimes	99	297	24.44%
4. 1 - Rarely	17	34	4.20%
5. 0- Never	17	17	4.20%
Total	405	1607	79.36%

11. Your mentor does a necessary follow-up with an assigned task to you.	Responses	Weighted Responses	Percent
1. 4 - Every time	186	930	45.93%
2. 3 - Usually	107	428	26.42%
3. 2 - Occasionally/Sometimes	69	207	17.04%
4. 1 - Rarely	35	70	8.64%
5. 0 - I don't have a mentor	8	8	1.98%
Total	405	1643	81.14%

12. The teachers illustrate the concepts through examples and applications.	Responses	Weighted Responses	Percent
1. 4 - Every time	191	955	47.16%
2. 3 - Usually	100	400	24.69%

12. The teachers illustrate the concepts through examples and applications.	Responses	Weighted Responses	Percent
3. 2 - Occasionally/Sometimes	85	255	20.99%
4. 1- Rarely	22	44	5.43%
5. 0 - Never	7	7	1.73%
Total	405	1661	82.02%

13. The teachers identify your strengths and encourage you with providing right level of challenges.	Responses	Weighted Responses	Percent
1. 4 - Fully	166	830	40.99%
2. 3 - Reasonably	117	468	28.89%
3. 2 - Partially	85	255	20.99%
4. 1 - Slightly	20	40	4.94%
5. 0- Unable to	17	17	4.20%
Total	405	1610	79.51%

14. Teachers are able to identify your weaknesses and help you to overcome them.	Responses	Weighted Responses	Percent
1. 4 - Every time	175	875	43.21%
2. 3 - Usually	106	424	26.17%
3. 2 - Occasionally/Sometimes	85	255	20.99%
4. 1 - Rarely	24	48	5.93%
5. 0 - Never	15	15	3.70%
Total	405	1617	79.85%

15. The institution makes effort to engage students in the monitoring, review and continuous quality improvement of the teaching learning process.	Responses	Weighted Responses	Percent
1. 4 - Strongly agree	150	750	37.04%
2. 3 - Agree	120	480	29.63%
3. 2 - Neutral	102	306	25.19%
4. 1 - Disagree	22	44	5.43%
5. 0 - Strongly disagree	11	11	2.72%
Total	405	1591	78.57%

16. The institute/ teachers use student centric methods, such as experiential learning, participative learning and problem solving methodologies for enhancing learning experiences.	Responses	Weighted Responses	Percent
1. 4 - To a great extent	158	790	39.01%
2. 3 - Moderate	109	436	26.91%
3. 2 - Some what	99	297	24.44%
4. 1 - Very little	19	38	4.69%
5. 0 - Not at all	20	20	4.94%
Total	405	1581	78.07%

17. Teachers encourage you to participate in extracurricular activities	Responses	Weighted Responses	Percent
1. 4 - Strongly agree	145	725	35.80%
2. 3 - Agree	114	456	28.15%

17. Teachers encourage you to participate in extracurricular activities	Responses	Weighted Responses	Percent
3. 2 - Neutral	95	285	23.46%
4. 1 - Disagree	27	54	6.67%
5. 0 - Strongly disagree	24	24	5.93%
Total	405	1544	76.25%

18. Efforts are made by the institute/ teachers to inculcate soft skills, life skills and employability skills to make you ready for the world of work.	Responses	Weighted Responses	Percent
1. 4 - To a great extent	166	830	40.99%
2. 3 - Moderate	94	376	23.21%
3. 2 - Some what	99	297	24.44%
4. 1 - Very little	23	46	5.68%
5. 0 - Not at all	23	23	5.68%
Total	405	1572	77.63%

19. What percentage of teachers uses ICT tools such as PPTs, Multimedia, animations, etc. while teaching.	Responses	Weighted Responses	Percent
1. 4 - Above 90%	164	820	40.49%
2. 3 - 70 - 89%	109	436	26.91%
3. 2 - 50 - 69%	93	279	22.96%
4. 1 - 30 - 49%	30	60	7.41%
5. 0 - Below 29%	9	9	2.22%
Total	405	1604	79.21%

20. The overall quality of teaching-learning process in your institute is very good	Responses	Weighted Responses	Percent
1. 4 -Strongly agree	166	830	40.99%
2. 3 - Agree	102	408	25.19%
3. 2 - Neutral	101	303	24.94%
4. 1 - Disagree	17	34	4.20%
5. 0 - Strongly disagree	19	19	4.69%
Total	405	1594	78.72%

21. Give three observation / suggestions to improve the overall teaching - learning experience in your institution. (Observation/Suggestion may also be a review of any course content of the syllabus/ Content you would have wished to learn).	Responses	Weighted Responses	Percent
1. 4- PLEASE WRITE IF ANY COMMENT	189	945	46.67%
2. 3- PLEASE WRITE IF ANY COMMENT	65	260	16.05%
3. 2- PLEASE WRITE IF ANY COMMENT	71	213	17.53%
4. 1- PLEASE WRITE IF ANY COMMENT	41	82	10.12%
5. 0- PLEASE WRITE IF ANY COMMENT	39	39	9.63%
Total	405	1539	76.00%

Summary Report

Number of people Responded / Total number of Responders is **405 / 441** People.

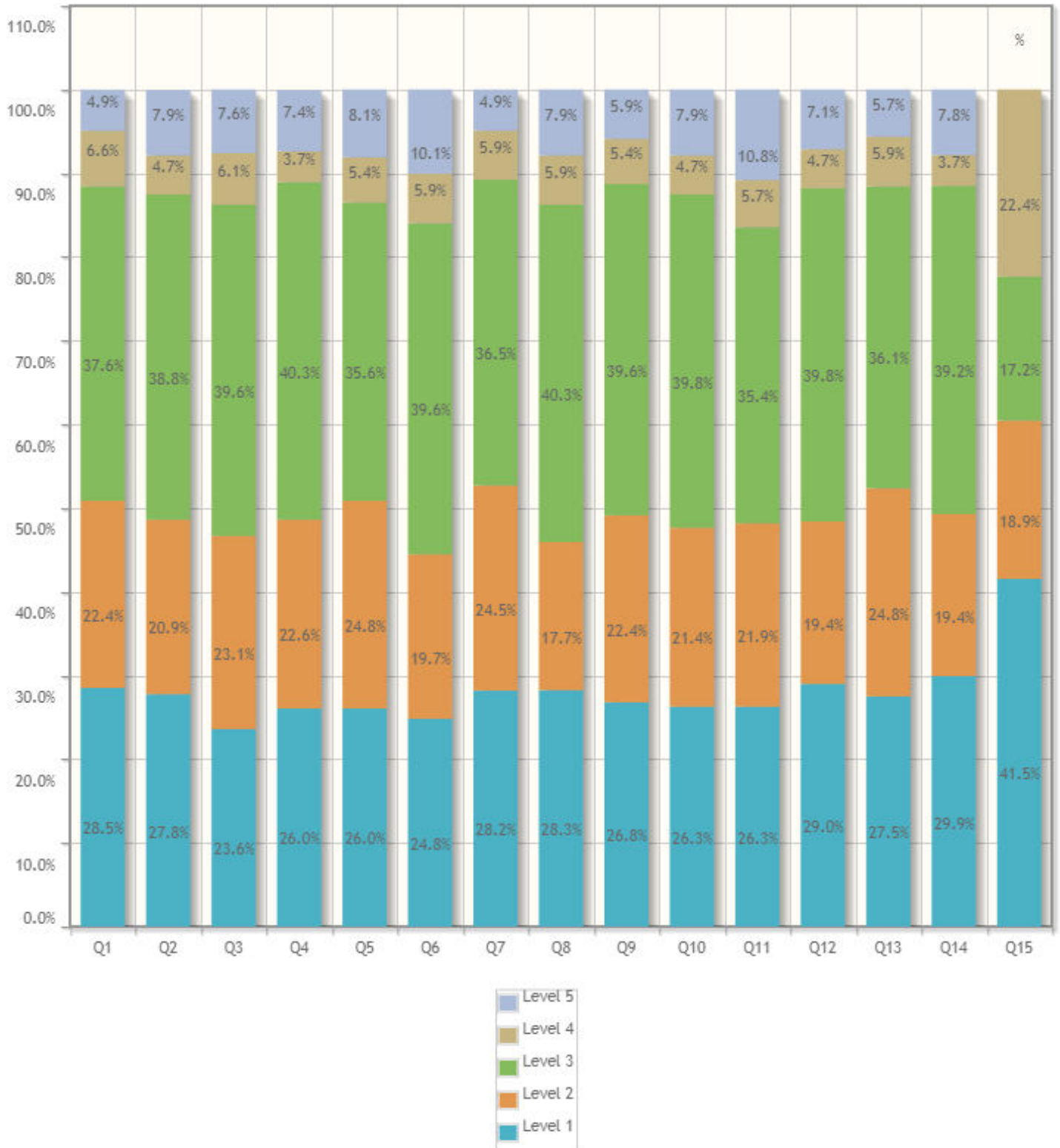
Questions	Total Response Count	Weighted Response Percent
How much of the syllabus was covered in the class?	1692	83.56%
How well did the teachers prepare for the classes?	1561	77.47%
How well were the teachers able to communicate?	1576	77.83%
The teacher's approach to teaching can best be described as	1541	76.10%
Fairness of the internal evaluation process by the teachers.	1596	78.81%
Was your performance in assignments discussed with you?	1653	81.63%
The institute takes active interest in promoting internship opportunities for students.	1577	77.88%
The teaching and mentoring process in your institution facilitates you in cognitive, social and emotional growth.	1581	78.07%
The institution provides multiple opportunities to learn and grow	1556	76.84%
Teachers inform you about your expected competencies, course outcomes and programme outcomes and review the course syllabus in the class.	1607	79.36%
Your mentor does a necessary follow-up with an assigned task to you.	1643	81.14%
The teachers illustrate the concepts through examples and applications.	1661	82.02%
The teachers identify your strengths and encourage you with providing right level of challenges.	1610	79.51%
Teachers are able to identify your weaknesses and help you to overcome them.	1617	79.85%
The institution makes effort to engage students in the monitoring, review and continuous quality improvement of the teaching learning process.	1591	78.57%
The institute/ teachers use student centric methods, such as experiential learning, participative learning and problem solving methodologies for enhancing learning experiences.	1581	78.07%
Teachers encourage you to participate in extracurricular activities	1544	76.25%
Efforts are made by the institute/ teachers to inculcate soft skills, life skills and employability skills to make you ready for the world of work.	1572	77.63%

Questions	Total Response Count	Weighted Response Percent
What percentage of teachers uses ICT tools such as PPTs, Multimedia, animations, etc. while teaching.	1604	79.21%
The overall quality of teaching-learning process in your institute is very good	1594	78.72%
Give three observation / suggestions to improve the overall teaching - learning experience in your institution. (Observation/Suggestion may also be a review of any course content of the syllabus/ Content you would have wished to learn).	1539	76.00%
Total Feedback	33496	78.79%

Survey Details - Detailed & Summary Report

Survey: 2023 -24 2nd SEMESTER STUDENT SATISFACTION SURVEY (PART B)	Survey Type: Fresh Survey
Survey For: Faculty Feedback	Program: First Year Engineering in First Year

Detailed Report



1. Adequacy of Laboratory facilities\n(Number of set-ups/ equipment /tools etc.)	Responses	Weighted Responses	Percent
1. 5. Excellent	116	580	28.50%
2. 4. Very Good	91	364	22.36%
3. 3. Good	153	459	37.59%
4. 2. Fair	27	54	6.63%
5. 1. Poor	20	20	4.91%

1. Adequacy of Laboratory facilities\n(Number of set-ups/ equipment /tools etc.)	Responses	Weighted Responses	Percent
Total	407	1477	72.58%

2. Mechanism and approach to provide exposure to external world through Internships, Field Visits, Guest Lectures, Expert Talks etc.	Responses	Weighted Responses	Percent
1. 5. Excellent	113	565	27.76%
2. 4. Very Good	85	340	20.88%
3. 3. Good	158	474	38.82%
4. 2. Fair	19	38	4.67%
5. 1. Poor	32	32	7.86%
Total	407	1449	71.20%

3. Infrastructure (Furniture/Black Board / Illumination/Ventilation etc.)	Responses	Weighted Responses	Percent
1. 5. Excellent	96	480	23.59%
2. 4. Very Good	94	376	23.10%
3. 3. Good	161	483	39.56%
4. 2. Fair	25	50	6.14%
5. 1. Poor	31	31	7.62%
Total	407	1420	69.78%

4. Mechanism and approach to deal with students/parents grievances	Responses	Weighted Responses	Percent
1. 5. Excellent	106	530	26.04%
2. 4. Very Good	92	368	22.60%
3. 3. Good	164	492	40.29%
4. 2. Fair	15	30	3.69%
5. 1. Poor	30	30	7.37%
Total	407	1450	71.25%

5. Students guidance and mentoring facilities	Responses	Weighted Responses	Percent
1. 5. Excellent	106	530	26.04%
2. 4. Very Good	101	404	24.82%
3. 3. Good	145	435	35.63%
4. 2. Fair	22	44	5.41%
5. 1. Poor	33	33	8.11%
Total	407	1446	71.06%

6. Support for co-curricular and extra-curricular activities	Responses	Weighted Responses	Percent
1. 5. Excellent	101	505	24.82%
2. 4. Very Good	80	320	19.66%
3. 3. Good	161	483	39.56%
4. 2. Fair	24	48	5.90%
5. 1. Poor	41	41	10.07%
Total	407	1397	68.65%

7. Library Facility	Responses	Weighted Responses	Percent
1. 5. Excellent	115	575	28.19%
2. 4. Very Good	100	400	24.51%
3. 3. Good	149	447	36.52%
4. 2. Fair	24	48	5.88%
5. 1. Poor	20	20	4.90%
Total	408	1490	73.04%

8. Sports Facility	Responses	Weighted Responses	Percent
1. 5. Excellent	115	575	28.26%
2. 4. Very Good	72	288	17.69%
3. 3. Good	164	492	40.29%
4. 2. Fair	24	48	5.90%
5. 1. Poor	32	32	7.86%
Total	407	1435	70.52%

9. Canteen Facility	Responses	Weighted Responses	Percent
1. 5. Excellent	109	545	26.78%
2. 4. Very Good	91	364	22.36%
3. 3. Good	161	483	39.56%
4. 2. Fair	22	44	5.41%
5. 1. Poor	24	24	5.90%
Total	407	1460	71.74%

10. Transport Facility	Responses	Weighted Responses	Percent
1. 5. Excellent	107	535	26.29%
2. 4. Very Good	87	348	21.38%
3. 3. Good	162	486	39.80%
4. 2. Fair	19	38	4.67%
5. 1. Poor	32	32	7.86%
Total	407	1439	70.71%

11. Internet Facility	Responses	Weighted Responses	Percent
1. 5. Excellent	107	535	26.29%
2. 4. Very Good	89	356	21.87%
3. 3. Good	144	432	35.38%
4. 2. Fair	23	46	5.65%
5. 1. Poor	44	44	10.81%
Total	407	1413	69.43%

12. Housekeeping	Responses	Weighted Responses	Percent
1. 5. Excellent	118	590	28.99%
2. 4. Very Good	79	316	19.41%
3. 3. Good	162	486	39.80%
4. 2. Fair	19	38	4.67%

12. Housekeeping	Responses	Weighted Responses	Percent
5. 1. Poor	29	29	7.13%
Total	407	1459	71.70%

13. First Aid Facility	Responses	Weighted Responses	Percent
1. 5. Excellent	112	560	27.52%
2. 4. Very Good	101	404	24.82%
3. 3. Good	147	441	36.12%
4. 2. Fair	24	48	5.90%
5. 1. Poor	23	23	5.65%
Total	407	1476	72.53%

14. Security Facility	Responses	Weighted Responses	Percent
1. 5. Excellent	122	610	29.90%
2. 4. Very Good	79	316	19.36%
3. 3. Good	160	480	39.22%
4. 2. Fair	15	30	3.68%
5. 1. Poor	32	32	7.84%
Total	408	1468	71.96%

15. Suggestions, if any:	Responses	Weighted Responses	Percent
1. 4- PLEASE WRITE IF ANY COMMENT	169	676	41.52%
2. 3- PLEASE WRITE IF ANY COMMENT	77	231	18.92%
3. 2- PLEASE WRITE IF ANY COMMENT	70	140	17.20%
4. 1- PLEASE WRITE IF ANY COMMENT	91	91	22.36%
Total	407	1138	69.90%

Summary Report

Number of people Responded / Total number of Responders is **407 / 441** People.

Questions	Total Response Count	Weighted Response Percent
Adequacy of Laboratory facilities\n(Number of set-ups/ equipment /tools etc.)	1477	72.58%
Mechanism and approach to provide exposure to external world through Internships, Field Visits, Guest Lectures, Expert Talks etc.	1449	71.20%
Infrastructure (Furniture/Black Board / Illumination/Ventilation etc.)	1420	69.78%
Mechanism and approach to deal with students/parents grievances	1450	71.25%
Students guidance and mentoring facilities	1446	71.06%
Support for co-curricular and extra-curricular activities	1397	68.65%
Library Facility	1490	73.04%
Sports Facility	1435	70.52%
Canteen Facility	1460	71.74%
Transport Facility	1439	70.71%
Internet Facility	1413	69.43%
Housekeeping	1459	71.70%
First Aid Facility	1476	72.53%
Security Facility	1468	71.96%
Suggestions, if any:	1138	55.92%
Total Feedback	21417	70.14%